





## OUR VISION

---

To be a pioneer in delivering  
Conventional and renewable  
energy solutions



## OUR MISSION

---

To be trusted by our customers  
to provide reliable energy  
solutions, delivered through the  
expertise of our dedicated  
teams and the support of our  
global partners



## OUR CORE VALUES

---

Integrity  
Excellence  
Honesty  
Teamwork  
Loyalty  
Commitment  
Social Responsibility

# 45+ YEARS

Supporting People, Enterprises & The community with Energy Solutions



Countries



Employees & Growing



Manufacturing Plants



Branches & Service Centers



Global Partners



Gigawatts Power

# LEADERSHIP



**Dr. Marcus Schumacher**  
Group Chief Executive  
Officer (CEO)



**Paul Grant**  
Group Chief  
Financial Officer



**Karim Jubaili**  
Group Director  
Of Operations



**Sana Jubaili**  
Director of Corporate  
Governance &  
Human Resources



**Leonardo Zambitte**  
Chief Commercial  
Officer



**Hendus Venter**  
Group Chief Information  
Officer (CIO)



**Mohammad Jaradat**  
Group Business  
Development Director



**Dalia Jubaili**  
Director  
Corporate Affairs



**Maya El Hussein**  
Group HR Head

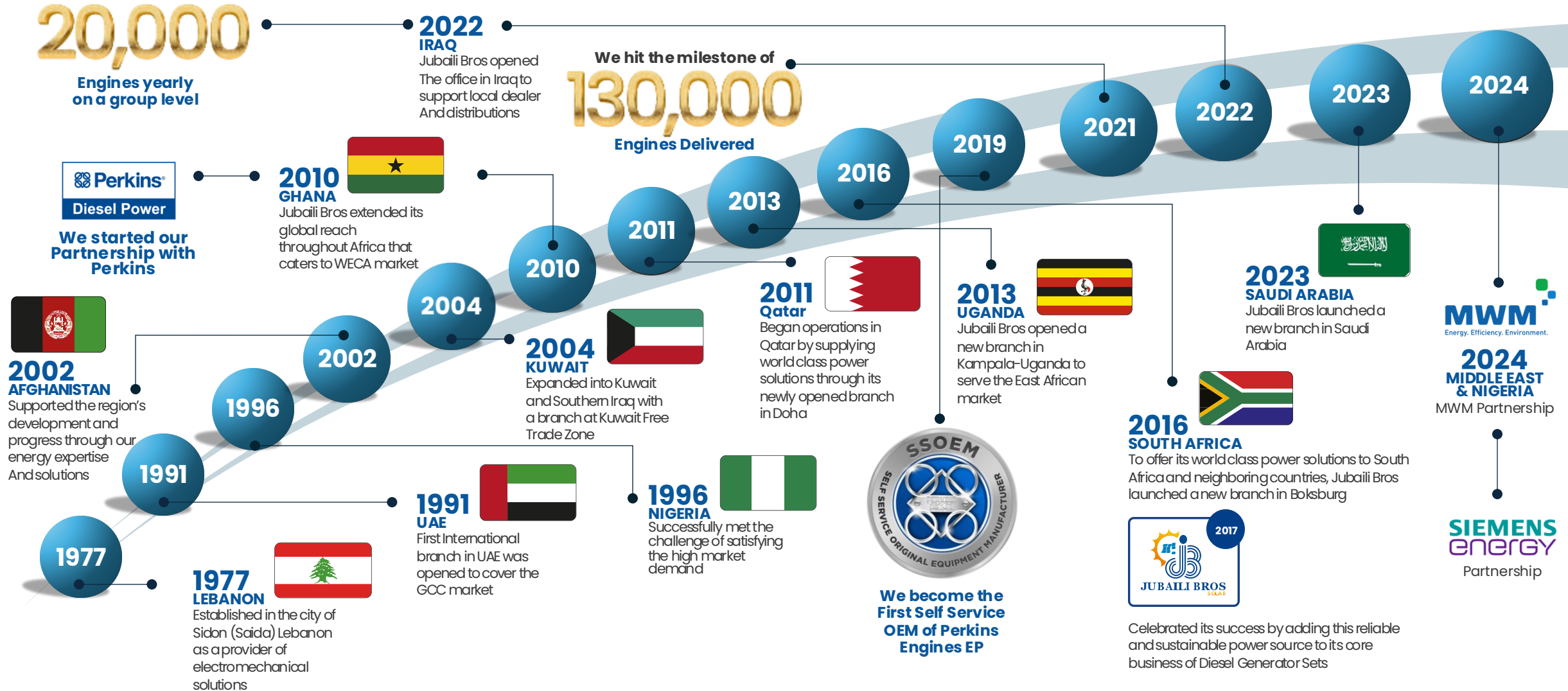
# MAJOR MILESTONES



**20,000**

Engines yearly on a group level

We hit the milestone of **130,000** Engines Delivered





-  **JB OFFICES**
-  **DEALER LOCATIONS**
-  **MARAPCO**
-  **JB FACTORIES**
-  **JB ASSEMBLY LINES - UK & KSA**

**Operating in  
multiple countries with  
various offices  
and dealer networks**

# TECHNOLOGY PARTNERS



## CONVENTIONAL POWER

  
Perkins®  
Diesel Power

  
MWM  
Energy. Efficiency. Environment.

  
Nidec  
All for dreams  
LEROY-SOMER™

  
meccalte

  
DSE

  
ABB

  
SIEMENS  
energy

## RENEWABLE POWER

  
Jinko Solar  
Building Your Trust in Solar

  
JA SOLAR

  
GOODWE

  
Voltronic Power  
Advancing Power

  
BYD

  
LEOCH  
LEOCH BATTERY

  
POWERED BY  
ELUM  
ENERGY

# MANUFACTURING & ASSEMBLY

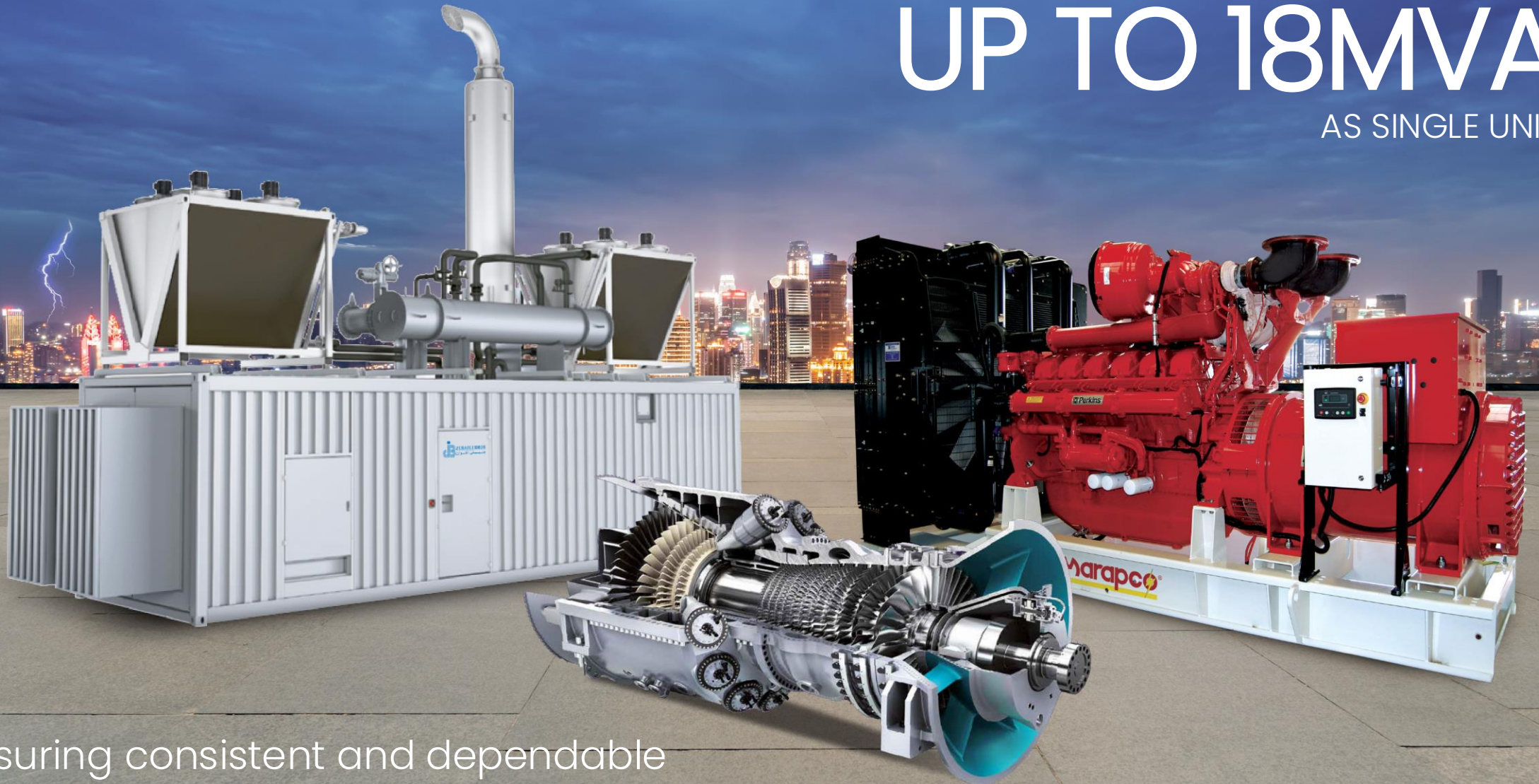




# CONVENTIONAL ENERGY SOLUTIONS

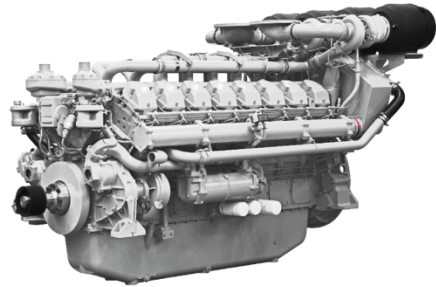
# UP TO 18MVA

AS SINGLE UNIT

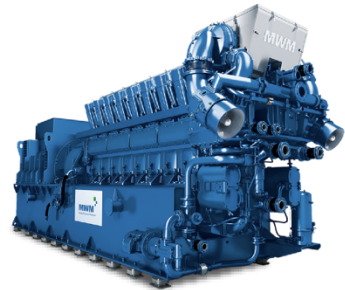


Ensuring consistent and dependable power for all applications

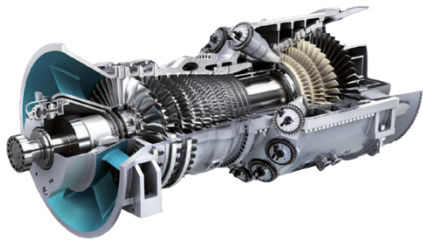
# PRODUCT RANGE



## DIESEL GENSETS



## GAS GENSETS



## TURBINES



● 50/60 Hz ● 11/0.4 kV

# DIESEL GENERATING SETS



50HZ & 60HZ

9 kVA – 4000 kVA





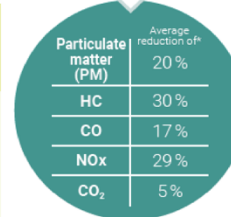
## A closer look at its properties

### HVO100

In addition to their renewable feedstock, biofuels have certain characteristics. Their main properties are briefly presented below.

<b>ENGINE COMPATIBILITY</b> Compatible with all vehicles. Heavy-duty manufacturers have homologated their entire Euro VI range for this fuel.	<b>MAINTENANCE</b> No operating changes. There is nothing specific to adapt or maintain, when compared to a conventional fuel.	<b>CONSUMPTION</b> The use of HVO100 results in a slight increase in volume consumption (below 4%) due to its lower density, when compared to a standard diesel fuel.
<b>COMBUSTION</b> The use of HVO100 cuts vehicle CO <sub>2</sub> tailpipe emissions by around 4% to 5%.	<b>STORAGE</b> It is very stable over time and not very susceptible to oxidative degradation.	<b>COLD FLOW PROPERTIES</b> Its cold flow properties are at least on a par with those of a standard diesel fuel.

### REGULATED POLLUTANT AND CO<sub>2</sub> EMISSIONS



Values measured before the after-treatment system

\*Tests performed with an EN 15940-compliant HVO100 fuel in 2018 and 2019 on different types of vehicles, compared to a standard EN 590 diesel fuel.

### IMPACTS ON CARBON EMISSIONS

Unlike fossil fuels, the carbon emissions released when a biofuel is burned are partially offset by the carbon dioxide captured during the growing plant's photosynthesis. Additionally, biofuels are also made from waste and residues, providing an alternative solution to using agricultural resources as feedstock, and are part of an overall approach to a circular economy. As a result, renewable fuels help cut carbon emissions by at least 50% and up to 90%\*, when compared to a standard fuel\*\*.

\*Depending on the origin of the feedstock used during production, measured over a well-to-wheel cycle.  
 \*\*In compliance with EU regulations.



## Conventional diesel and biofuels: a comparison

	B7	B100 EN 14214-compliant	HVO100 EN 15940-compliant
Operability	★★★★	★★★★	★★★★
Storage	★★★☆☆	★★★☆☆	★★★★★
Cold Flow properties	★★★☆☆	★★★★☆	★★★★★
Regulated polluting emissions before the after-treatment system	★★★☆☆	★★★★★	★★★★★
Tailpipe polluting emissions	★★★★★	★★★★★	★★★★★
Carbon emissions from well to wheel	★★★☆☆	★★★★★	★★★★★
Vehicle tailpipe carbon emissions	★★★☆☆	★★★☆☆	★★★★★

# GAS GENERATING SETS



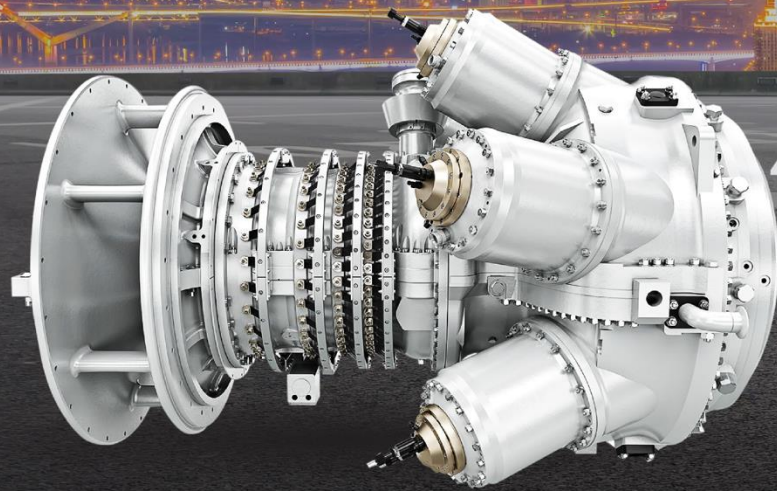
50HZ & 60HZ  
LPG & NG

15 kVA – 5600 kVA

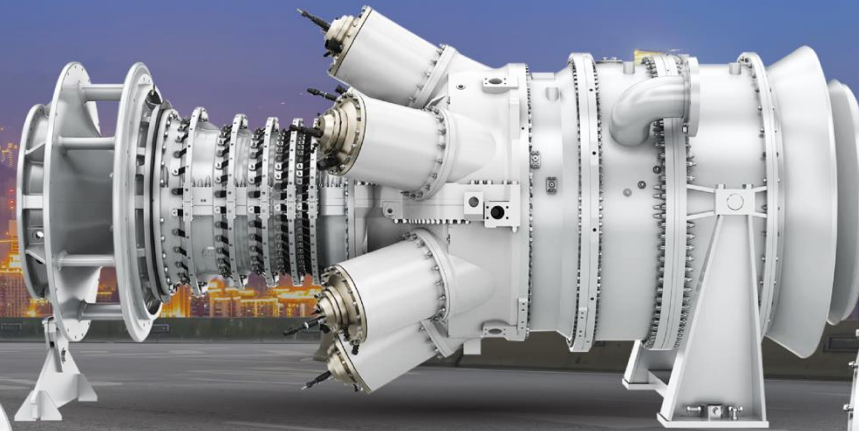


Typically designed to meet various power demands, from backup power to primary energy sources, gas gensets come in a range of sizes and capacities.

Powering a sustainable future with advanced gas turbine technology. Ideal for small utilities, independent power producers, and the oil and gas industry. High efficiency and fast start capabilities make them suitable for decentralized power generation.



**SGT-300 (8-9 MW)**



**SGT-400 | 10-14 / 11-15 MW**



**SGT-100 (5/6 MW)**



Jubaili Bros offers superior-quality Changeover Panels and Automatic Transfer Switches (ATS) designed to seamlessly transfer loads from main power to emergency power without operator intervention. Our panels are available in capacities of up to 6300 Amps, ensuring reliable performance for a wide range of applications. Additionally, we provide a comprehensive range of synchronizing systems, totalizing panels and MDBs, professionally assembled to meet customers' specific requirements and needs.



JB offers a complete range of power and distribution transformers designed to grant the reliability, durability, and efficiency required in utility, industrial, and commercial applications. Power distribution solutions for utility and industry, covering also highly demanding applications, such as data centers, oil and gas, mining, and marine.

A wide choice of products designed as per IEC, ANSI, CSA, ENA, GB, GOST and other standards. CSS is a type tested and arc tested assembly comprising an enclosure containing medium voltage (MV) switchgear, distribution transformers, switchboards, connections and auxiliary equipment to supply low voltage energy from medium voltage systems. These substations are typically installed in locations accessible to the public and ensure protection for all people according to specified service conditions.

# MOBILE LIGHT TOWERS



Our Lighting towers are best suited for construction sites, special events, emergency services, sporting activities, mining and oilfield services, industrial work etc.

- Foldable Compact design best solution for storing and shipping
- Four foldable jacks
- LED lights
- ZONE 2 compatible
- Weatherproof enclosure
- External 2 weatherproof sockets
- External emergency push button
- External lockable fuel filling cap
- Lockable doors
- Topside forklift lifting point
- Reliable hand winch with automatic safety brake
- Oil and fuel external drain valve
- Oil pressure, coolant temperature and over current protection





# RENEWABLE ENERGY SOLUTIONS

# RENEWABLES & HYBRID SOLUTIONS



Jubaili Bros supports energy transition with renewable energy, storage, smart controllers, and traditional generators.



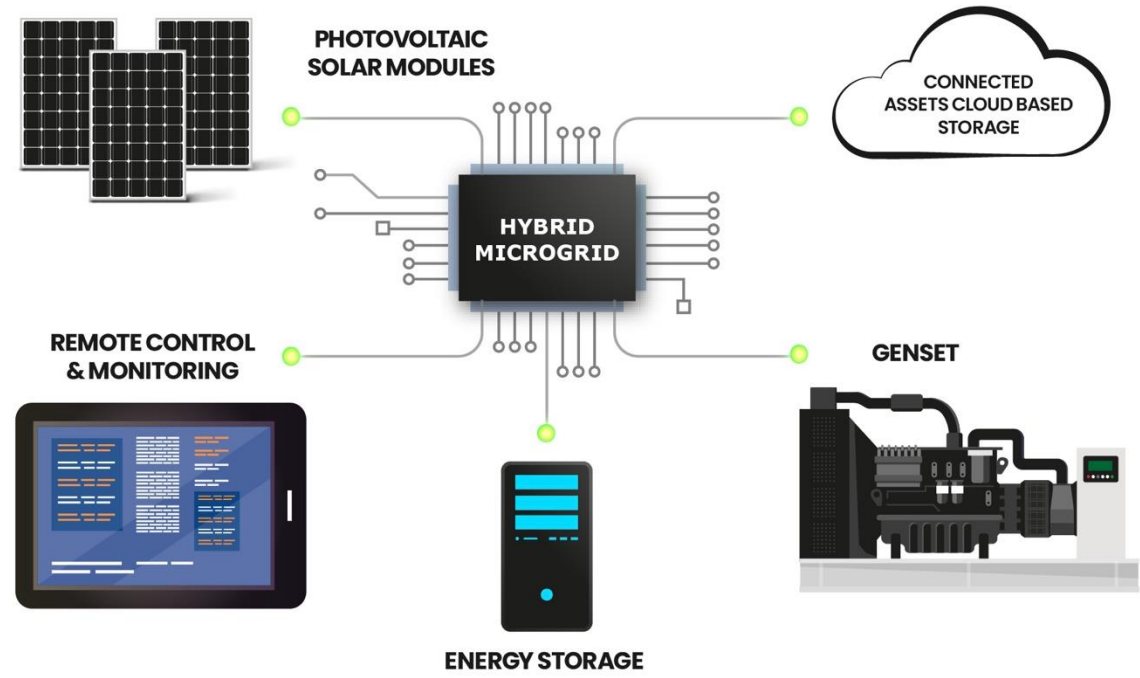
**JBE Control Series**  
Solar – Diesel Integration  
Controllers

**JBE Datalogger**  
Universal Data Logger

**Product Features:**

- ✓ System Monitoring and Control
- ✓ Power Flow Management
- ✓ Energy Storage Management
- ✓ Renewable Energy Integration
- ✓ Load Management
- ✓ Fault Detection and Protection
- ✓ Data Analysis and Reporting





## MICROGRIDS BRING SUSTAINABILITY AND RELIABILITY

As an industry expert in Diesel and Gas Energy Solutions, Jubaili Bros collaborates with its customers to achieve energy transition goals through the integration of renewable energy with energy storage systems, smart hybrid controllers, and conventional diesel and gas power generators.

Our **Hybrid Microgrid Solutions** enable customers to obtain the following benefits:

- Lower Total Net Present Cost (NPC) and Levelized Cost of Electricity (LCOE)
- Lower fuel usage while increasing system dependability and efficiency
- Reduced carbon footprint and non-reliance on unstable grid power

Efficient, low-cost and clean energy



Jubaili Bros Manufacturing Unit  
Nigeria





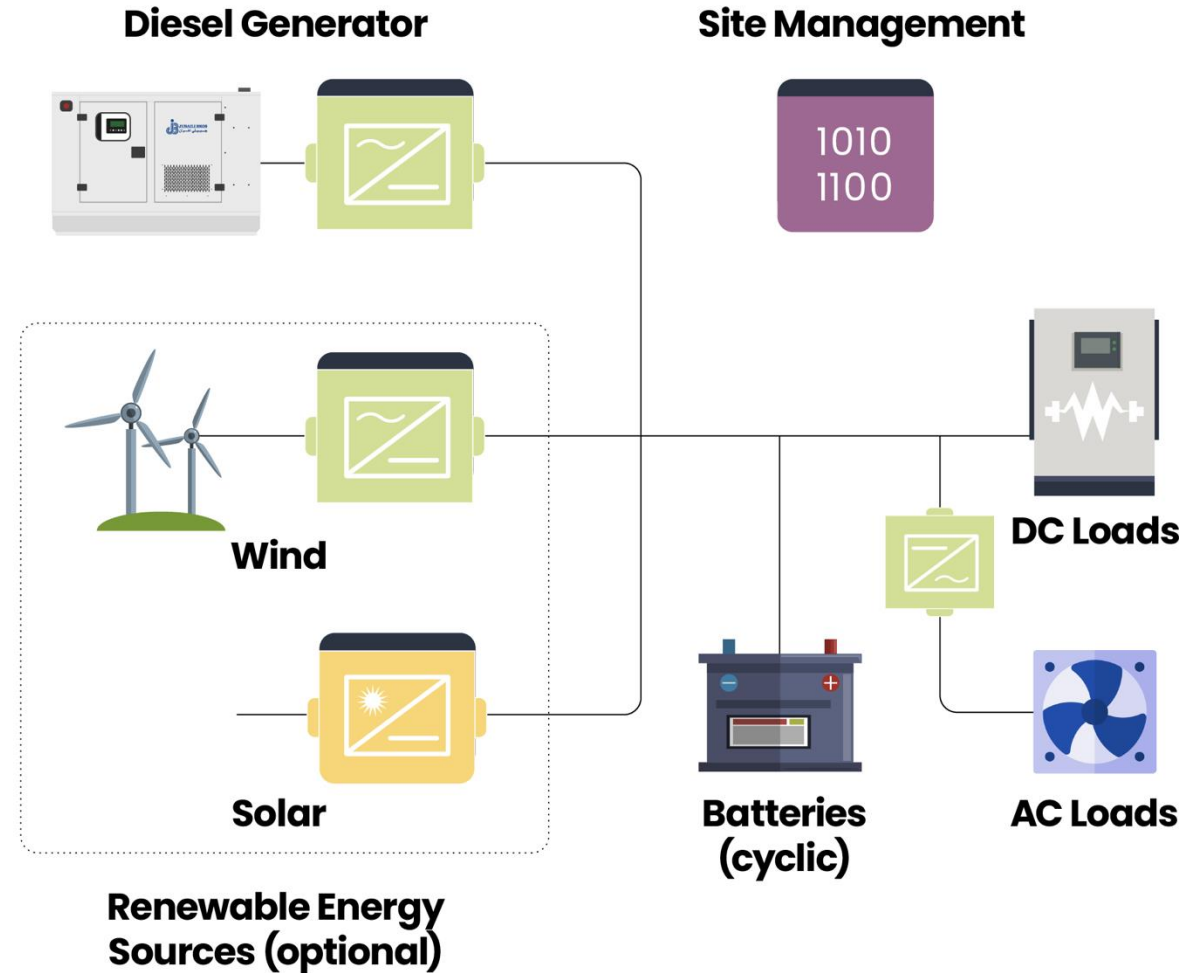
# Solar Hybrid Systems for Telecom

Most of the telecom systems using Diesel Generators are off the Grids or have Grids with poor availability. The use of renewable energy sources for remote telecommunication systems has become more popular recently due to technological advancements and reduced total cost of system ownership.

Renewable resources such as wind and Solar offer significant value to the system operations by reducing Levelized Cost of Electricity, as well as Carbon Footprint.

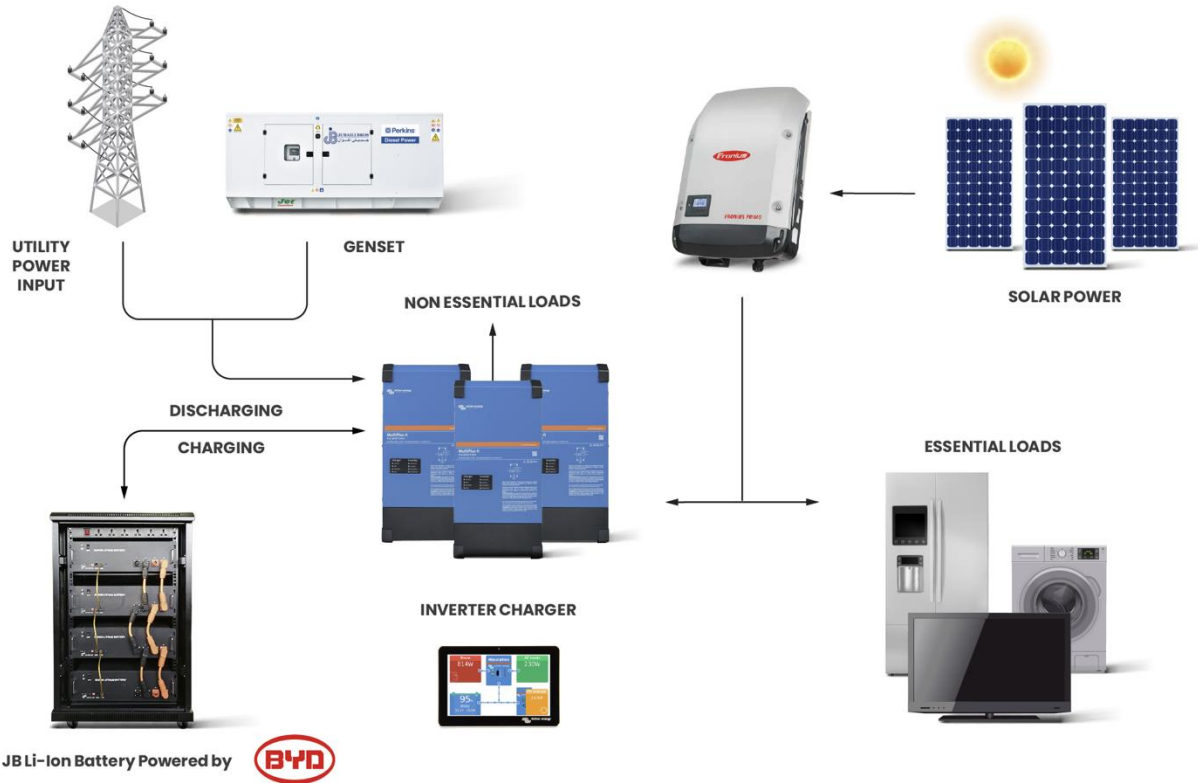
Jubaili Bros offers reliable Hybrid Power Solutions based on high efficiency Solar PV Modules, Lithium based Storage and efficient Hybrid controls. The Control Algorithms ensures energy priority selection based on cheapest source available in the system power architecture.

The system utilizes Lithium Ion Batteries with the capability to perform large number of discharge and recharge cycles, high round-trip efficiency and better temperature resistance.



# RESIDENTIAL HYBRID SOLUTIONS

3 kW-4.8 kWh to 20 kW-235 kWh



SYSTEM	NOMINAL LOAD	MAXIMUM	BATTERY	SOLAR PANELS	SOLAR CHARGER	BATTERY INVERTER	SOLAR INVERTER	PV COUPLING
JBS 6kW/25A-06h(1PH)	6.0kW	6KW 25A 6h	40kWh Lithium Ion (8 X 5kWh Modules in Parallel) 48V System	16 Panels - 8.7KWp	100A	8kVA	-	DC
JBS 6kW/25A-06h(3PH)	6.0kW	7KW 30A 5h	40kWh Lithium Ion (8 X 5kWh Modules in Parallel) 48V System	16 Panels - 8.7KWp	100A	3 X 3kVA	-	DC

# COMMERCIAL & INDUSTRIAL INVERTERS 25 – 125KW



## GOODWE



Up to 12 MPPT



Full Load Operation  
at 50°C



Up to 15% AC Output  
Overloading



Arc-Fault Circuit  
Interrupter



Up to 50%  
DC Oversizing

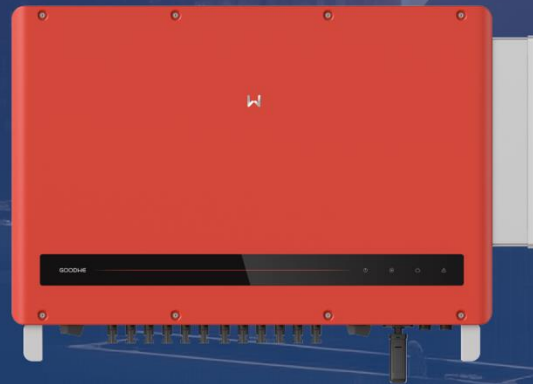


Power Line  
Communication



**GT**

100-125kW 12/15 MPPTs



**HT**

100-120kW up to 12 MPPTs



**SMT**

25-80kW up to 6 MPPTs



**SMT-US**

50/60kW up to 6 MPPTs



## Liquid Cooling ESS Solution SunGiga

JKE344K2HDLA



### APPLICATION



#### PEAK SHAVING

Discharge at time of peak demand to reduce expensive demand charge.



#### ENERGY BACKUP

Powers a facility when the grid goes down, or application in areas without electricity.



#### CAPACITY FIRMING

Smooth out the intermittency of renewables by storing and dispatching when needed.



#### OPTIMIZATION THE UTILIZATION OF RENEWABLE

Daytime load maximizes PV power, and excess power is stored for use at night.



#### ARBITRAGE

Carry out arbitrage by using peak and valley electricity prices in different time periods.



#### COST SAVING

Supply power at a distributed location to reduce investment in the construction of the grid.

## For Dependable Emergency Energy Solutions

Jubaili Bros offers our state-of-the-art Mobile **Solar Lighting Tower**, engineered to light up your outdoor areas with sustainable efficiency and exceptional convenience. Perfect for outdoor events, construction sites, or emergency scenarios, this lighting tower provides a reliable solution.



- ✓ 4x 100W AC LED Flood Lights
- ✓ 3x 555W Jinko Modules
- ✓ 4x 200Ah-12V JB Lead Carbon Batteries
- ✓ 3kW Hybrid Inverter/Charger
- ✓ 13A Twin Socket for Auxiliary Loads

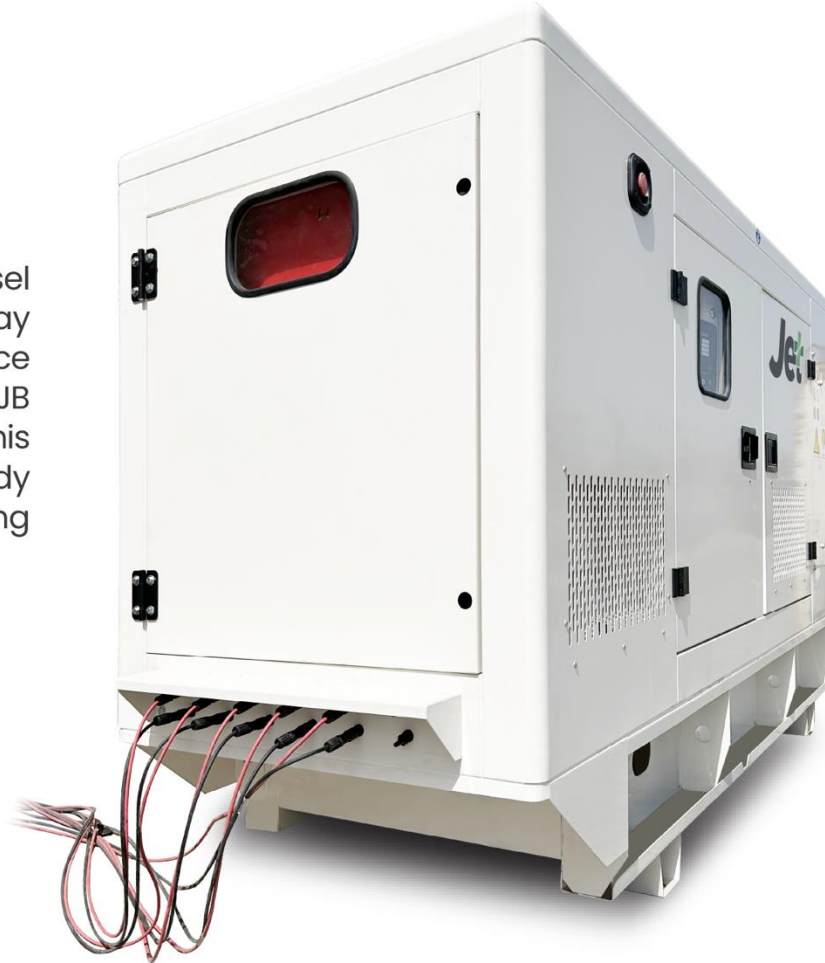
# JET+ HYBRID GENSET



# Jet+

Jubaili Bros is revolutionizing traditional Diesel Generators through sustainable innovation. Say goodbye to surging fuel prices and embrace eco-friendliness and lower carbon emissions with JB Bros Solar-Diesel Hybrid Generators, the JET+. This system comes predesigned, preconfigured, and ready for solar integration, in line with our mission of crafting Sustainable Power Solutions.

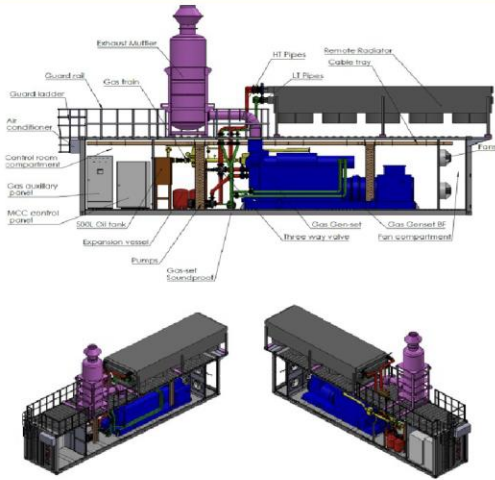
- ✓ Reduce fuel consumption up to 60%.
- ✓ Lower Carbon emissions.
- ✓ Plug & Play Hybrid Generators.
- ✓ Multi MPPT Solar inputs.
- ✓ Smart Energy Management System.
- ✓ Lower OPEX.
- ✓ Compatible with all solar panels.





# ENGINEERING SOLUTIONS & TURNKEY PROJECTS

## ENGINEERING SOLUTIONS



We specialize in providing end-to-end engineering support for both existing buildings and new energy centre's, offering:

- Customized Designs
- Advanced Technology
- Scalability
- Compliance and Safety
- Comprehensive Support

## ROOM INSULATIONS



Our engineering team leverages advanced software and industry-leading techniques to deliver custom-built solutions that address:

- Heat Management
- Noise Reduction
- Safety
- Energy Efficiency
- Customization

## TURNKEY PROJECTS & INSTALLATION



Jubaili Bros is a trusted leader in delivering end-to-end turnkey solutions for gas engines, standby diesel power generation, and battery energy storage systems (BESS).

### We provide:

- Comprehensive Project Management
- Multi-Disciplinary Teams
- Customized Designs
- Quality Assurance
- Timely Delivery



# **AMPS**

## **AFTERMARKET – PARTS – SERVICES**

# 4000

Maintenance  
Contracts Worldwide

# 350

Technicians

# 3

Certified Overhauling  
Workshops

Almost  

# 120

Maintenance  
Pick Ups

# 24/7

Maintenance  
Service

## SPARE PARTS



At Jubaili Bros, we understand the critical role that high-quality spare parts play in ensuring the liability and longevity of your diesel generators. That's why we stock a complete range of genuine spare parts designed to meet the highest industry standards.

## FAT/SAT



We specialize in Factory and Site Acceptance Testing (FAT & SAT) to ensure top-quality, reliable power generation systems. Our rigorous procedures validate equipment performance both in the factory and on-site for seamless integration.

## TECHNICAL TRAINING



We provide expert training in power generation, covering diesel generator operations, maintenance, and troubleshooting through our skilled engineers.

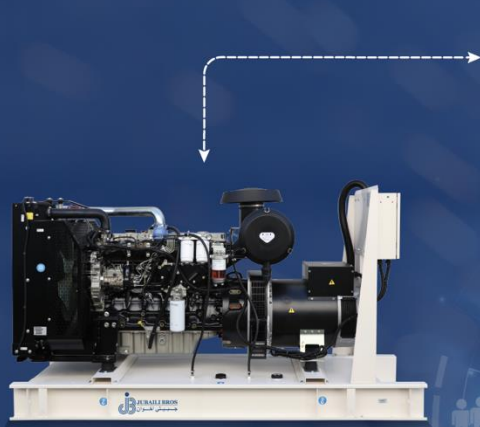
### Key Features of Our Training Programs:

- Expert-Led Sessions
- Comprehensive Curriculum Hands-On Training
- State-of-the-Art Facilities
- Customized Learning Certification

# CONNECTED ASSETS FOR ADVANCE PREDICTIVE MAINTENANCE



## PROGRAM OVERVIEW



### Earned Business Value:

- ✓ Fleet Management
- ✓ Customer Management
- ✓ Increasing MTBF
- ✓ Decreasing MTTR
- ✓ Leveraging on ML for predictive maintenance
- ✓ Easy access to asset condition
- ✓ Accurate and easily accessible KPIs
- ✓ Deeper business and marketing insight

### Key Features:

- ✓ Asset Monitoring
- ✓ Asset Tracking
- ✓ Condition based alarms and notifications
- ✓ Integration of business processes (aftermarket, procurement, production, etc...)
- ✓ Customised reports
- ✓ Data Analytics
- ✓ AI & Deep Learning



**Customer Satisfaction**

In 2019, Perkins Engines has presented Jubaili Bros with a special plaque recognizing its appointment as **Perkins First Electrical Power Self Service OEM**



## HOW IT BENEFITS OUR CUSTOMERS?

- ✓ Our Generators are built with Original Perkins Engines, purchased directly from Perkins Engine Company Ltd.
- ✓ We offer direct Warranty coverage globally, no need to contact Perkins's dealer in the region.
- ✓ We get direct branded spare parts from Perkins that are 100% genuine, which in turn guarantees perfect operation of generating sets.
- ✓ Our Engineers and technicians receive regular training from Perkins, ensuring they have a complete know-how of diesel generators.



# APPLICATIONS



## APPLICATIONS

To meet the urgent demand for reliable emergency power, Jubaili Bros partnered with a leading UAE Power Distribution Provider. Their main goal was to create a strong and efficient backup power system that could work well in emergency situations, even with limited space. This project demonstrated Jubaili Bros' expertise in delivering advanced energy solutions to meet the essential power needs of Abu Dhabi's residential areas.

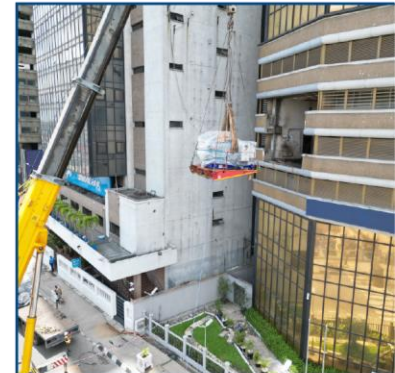




# DATA CENTER

Data centers require uninterrupted, reliable, and scalable power solutions to maintain critical operations, ensure data security, and meet stringent industry regulations. Traditionally, they have relied on grid power supplemented by standby diesel generators for backup. However, with rising energy consumption, increasing grid costs, and growing sustainability mandates, adopting a decentralized power approach has become essential.

Our energy solutions provide high-efficiency power generation, seamless backup integration, and intelligent load management to enhance resilience, optimize operational costs, and support sustainability goals. With a focus on redundancy, energy efficiency, and environmental responsibility, we help data centers achieve maximum uptime while reducing their carbon footprint.





# CONSTRUCTION

The construction industry operates in diverse and often remote environments where access to stable power is crucial for maintaining productivity and meeting project timelines. From powering heavy machinery, cranes, and concrete mixers to supporting on-site offices, lighting, and security systems, a reliable and adaptable energy solution is essential.

Our diesel generators provide robust, scalable, and fuel-efficient power, ensuring seamless operations even in the most demanding conditions. Construction sites often face challenges such as fluctuating power demands, fuel efficiency concerns, and increasing environmental regulations. To address these, we offer advanced diesel generators along with hybrid power solutions and smart energy management systems that optimize fuel consumption, reduce emissions, and enhance operational efficiency.

With our dependable power solutions, construction companies can minimize downtime, lower costs, and meet sustainability targets while ensuring uninterrupted workflow on-site.





## RENTAL

Jubaili Bros provides reliable and flexible energy solutions tailored for the genset rental sector, meeting temporary and customized power needs with ease. Our rental-spec diesel generators are designed for superior performance, fuel efficiency, and transportability, featuring advanced options like low noise levels (75-80dBA), built-in fuel tanks, external sockets, and synchronization capabilities. With added features such as GPS tracking, remote monitoring, and forklift-friendly designs, our generators ensure hassle-free operation and maintenance.

Trust Jubaili Bros to deliver robust, portable, and efficient power solutions for your rental fleet, backed by decades of expertise in the industry.





## OIL AND GAS

Jubaili Bros delivers robust and reliable energy solutions tailored to the demanding needs of the oil and gas sector. Our expertise ensures cost-effective, efficient, and uninterrupted power for critical operations, including drilling, extraction, and refining. Key considerations for oil and gas applications—such as durability in harsh environments, fuel efficiency, low maintenance requirements, and rapid repair times—are at the core of our designs.

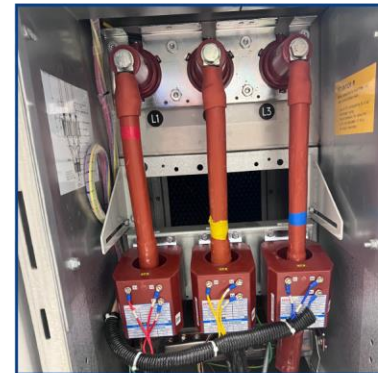
With advanced technologies like heavy-duty diesel generators, synchronization systems, and remote monitoring, we provide tailored solutions that maximize productivity and minimize downtime. Trust Jubaili Bros to power your oil and gas operations with precision and reliability.



## HEALTH CARE

Unexpected power failures in hospitals can have catastrophic consequences, putting patients' lives at risk and disrupting critical medical procedures. A resilient and dependable power supply is essential to ensure uninterrupted operation of life-saving equipment, surgical procedures, and diagnostic systems. Beyond powering medical devices, a reliable energy source is vital for maintaining lighting, heating, cooling, and hot water systems, which are crucial for patient comfort and infection control.

At Jubaili Bros, we understand the unique energy demands of healthcare facilities. Our advanced diesel generators and backup power solutions are designed to provide 100% uptime, seamless power transition, and compliance with healthcare standards. With features like automatic transfer switches (ATS), low noise operation, and remote monitoring, we ensure your facility remains operational during emergencies, safeguarding patient care and operational continuity. Trust Jubaili Bros to deliver the reliable energy solutions your healthcare facility needs to save lives and maintain critical operations.



# MILESTONE WIN RENEWABLES – 1 MWh ENERGY STORAGE PROJECT



Project Location:

**South Sudan**

## Project Specification:

- 3 x 200KVA Gensets
- 185 kWp/150KWac Solar System
- 2 x (250KW/540KWh) AC Coupled BESS
- 1250A Smart Hybrid Synchronization and totalization Panels

**500 kW / 1 MWh BESS**

**Solar 185 kWp / 150 kW**

**600 kVA  
Genset**

**2 x 540  
kWh**

**54.5  
kWp**

**64.5  
kWp**

**64.5  
kWp**

**DG  
3x 200  
kVA**

**2 x 250  
kW**

**3 x 50  
kW**

**1250 AF Smart Hybrid Synchronization Panel**





## Our Commitment

Jubaili Bros is dedicated to integrating Environmental, Social, and Governance (ESG) principles into our operations to drive sustainable growth and create long-term value for our stakeholders. Our strategy is built on three core pillars: Environment, Social, and Governance, each supported by actionable initiatives to achieve measurable progress.

## Our Vision

To be a pioneer in delivering conventional and renewable energy solutions, creating shared value for our stakeholders while driving positive environmental, social, and governance impact.

## Our Mission

To integrate ESG principles into every aspect of our operations, ensuring a sustainable future for our business, people, and communities, while being trusted by our customers to provide reliable energy solutions, delivered through the expertise of our dedicated team and the support of our global partners.



## Strategic Pillars

- 1. Environmental Stewardship**
  - Enhance energy efficiency and reduce greenhouse gas emissions.
  - Promote water conservation and sustainable waste management practices.
  - Invest in renewable energy solutions and eco-friendly technologies.
- 2. Social Responsibility**
  - Uphold human rights and promote health, safety, and wellness for all employees.
  - Foster diversity, equity, and inclusion across our workforce.
  - Strengthen community engagement through education, internships, and charitable initiatives.
- 3. Governance Excellence**
  - Maintain ethical business practices and robust compliance frameworks.
  - Strengthen risk management and data security measures.
  - Ensure a responsible and transparent supply chain.

## Implementation and Governance

- Establish an ESG Committee to oversee strategy execution and monitor progress.
- Engage cross-functional teams to drive initiatives across departments.
- Regularly track and report progress through an annual ESG report.

## OUR PROMISE

Jubaili Bros is committed to aligning with global sustainability frameworks and continuously improving our ESG practices. We aim to contribute meaningfully to societal and environmental goals while fostering trust and transparency with our stakeholders.

# AWARDS AND RECOGNITIONS



# CUSTOMERS & REGISTRATIONS



## TELECOM

IHS Towers of strength  
AMERICAN TOWER  
موبايلي mobily  
airtel  
ENERGY VISION  
etisalat by e  
BISWAL supporting you... seamlessly  
MTN  
IPI SOLUTIONS  
ITQAN

## OIL & GAS

LADOL  
LIMITLESS OPPORTUNITIES INDUSTRIES WEST AFRICA  
Oando  
TotalEnergies

## FINANCIAL

DUBAI EXPORTS مؤسسة دبي لتنمية الصادرات  
ADCE أبوظبي التجاري للخدمات الهندسية Abu Dhabi Commercial Engineering Services  
citibank  
FNB FIRST NATIONAL BANK  
CSC BANK  
access  
Stanbic Bank

## INDUSTRIAL

PRIMLAKS Food, Shelter, Light  
Graphic Packaging INTERNATIONAL  
DANGOTE

## ENERGY AS A SERVICE

DAYBREAK SOLAR  
Starsight  
rensource

## CONSTRUCTION

LAFARGE  
TREVIGroup  
JULIUS BERGER  
CAPPA-D'ALBERTO P.L.C.  
MENASCO MECHANICAL CONTR. LLC.

# CUSTOMERS & REGISTRATIONS



## FMCG

**Honeywell**



## SOCIAL & CULTURAL



## MEDICAL



## HOSPITALITY



## POWER & WATER



شركة أبوظبي للتوزيع  
Abu Dhabi Distribution Co.



هيئة مياه و كهرباء أبوظبي  
Abu Dhabi Water & Electricity Authority



الهيئة الاتحادية للكهرباء والماء  
Federal Electricity & Water Authority

هيئة كهرباء ومياه دبي  
Dubai Electricity & Water Authority



بلدية دبي  
DUBAI MUNICIPALITY



## DEFENSE & SECURITY



شرطة أبوظبي  
ABU DHABI POLICE



قيادة حرس الرئاسة  
Presidential Guard Command



شرطة دبي  
DUBAI POLICE



قيادة الأشغال العسكرية  
Command of Military Works



# THANK YOU

Please watch our Jubaili Bros Corporate Video

[Click Here](#)



[www.JubailiBros.com](http://www.JubailiBros.com)