

DIALIGHT



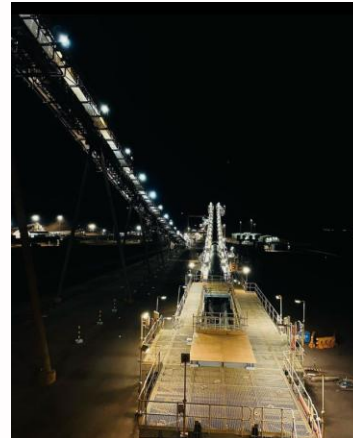
**MAJOR GREENFIELD PROJECTS
APAC**

Major Greenfield Projects - APAC

Rio Tinto Gudai-Darri

- **Description :** Iron Ore Mine (Australia)
- **Mine Owner:** Rio Tinto
- **EPC:** Worley
- **Total Amount:** \$3 Million AUD
- **Number of Fixtures:** 3400
- **100% Dialight Solution**
- **Dialight Fixtures:** Area lights, Bulkheads, Floods, High Bays, Linears, Streetlights

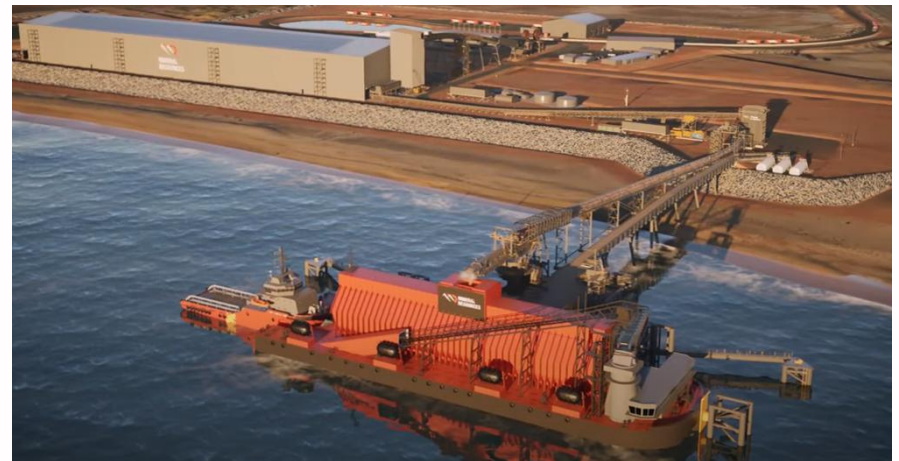
RioTinto



Major Greenfield Projects - APAC

MRL Kens Bore - Onslow

- **Description :** Iron Ore Mine & Port (Australia)
- **Mine Owner:** Mineral Resources Limited (MRL)
- **EPC:** CSI & MRL
- **Total Amount:** \$2.5 Million AUD
- **Number of Fixtures:** 2500
- **100% Dialight Solution**
- **Dialight Fixtures:** Bulkheads, Floods, High Bays, Streetlights



Major Greenfield/Browfield Projects - ME

Aluminium Bahrain Smelters

Description: Potline 6 Expansion – Green Field

End user: Aluminium Bahrain

EPCM: Bechtel Bahrain & India

Total Amount: \$3.5 Million USD

Number of Fixtures: 4500x

100% Dialight Solution

Dialight Fixtures: Area Lights, High bays, High Output Highbays, Floodlights, Linears, Low Bays, Bulkheads



Major Greenfield/Browfield Projects - ME

ADNOC Refining – Ruwais East Plant

Description: HCK/HSK Refurbishment MRO Abu Dhabi

End user: ADNOC Refining – Ruwais East Plant

Total Amount: \$2.5 Million USD

Number of Fixtures: 4000x

100% Dialight Solution

Dialight Fixtures: Area Lights Z1, High bays Z1, Linears Z1, Highbays



Major Greenfield Projects - APAC

BW Offshore Opal FPSO

- **Description :** FPSO
- **Owner:** BW Offshore
- **EPC:** BW Offshore
- **Total Amount:** \$1.6M USD
- **Number of Fixtures:** 4500x
- **100% Dialight Solution - external**
- **Dialight Fixtures:** Bulkheads, Floods, High Bays



Major Greenfield Projects - APAC

Rio Tinto Nammuldi

- **Description :** Iron Ore Mine (Australia)
- **Mine Owner:** Rio Tinto
- **EPC:** CSI
- **Total Amount:** \$2.4 Million AUD
- **Number of Fixtures:** 3800
- **100% Dialight Solution**
- **Dialight Fixtures:** Area lights, Bulkheads, Floods, High Bays, Linears, Streetlights

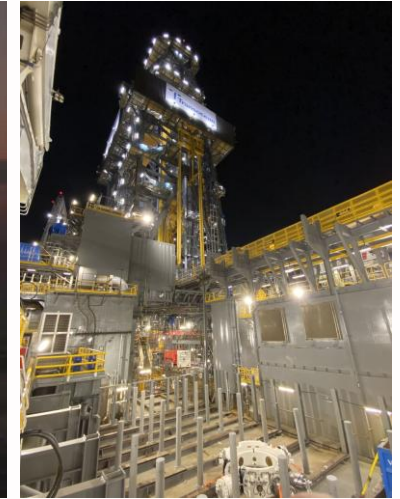
RioTinto



Major Greenfield Projects - APAC

Transocean Deepwater Titan & Atlas

- Description : Deepwater Drill ships 2x
- Owner: Transocean
- EPC: Transocean
- Total Amount: \$1.6M USD
- Number of Fixtures: 3000
- 100% Dialight Solution - External
- Dialight Fixtures: Linears, Floods



Major Greenfield Projects - APAC

Rio Tinto Yandi Sustaining

- **Description :** Iron Ore Mine (Australia)
- **Mine Owner:** Rio Tinto
- **EPC:** Calibre
- **Total Amount:** \$2.2 Million AUD
- **Number of Fixtures:** 3000
- **100% Dialight Solution**
- **Dialight Fixtures:** Area lights, Bulkheads, Floods, High Bays, Linears, Streetlights

RioTinto

wsp



Major Greenfield Projects - APAC

Wodgina Lithium

- **Description :** Lithium Mine
- **Mine Owner:** Mineral Resources Limited (MRL)
- **EPC:** CSI & MRL
- **Total Amount:** \$2 Million AUD
- **Number of Fixtures:** 2500
- **100% Dialight Solution**
- **Dialight Fixtures:** Area Lights, Bulkheads, Floods, High Bays, Streetlights, Linears



Major Greenfield Projects - APAC

Rio Tinto Robe Valley

- Description : Iron Ore Mine (Australia)
- Mine Owner: Rio Tinto
- EPC: Calibre
- Total Amount: \$2 Million AUD
- Number of Fixtures: 2600
- 100% Dialight Solution
- Dialight Fixtures: Area lights, Bulkheads, Floods, High Bays, Linears, Streetlights

RioTinto

wsp



Major Greenfield Projects - APAC

BHP South Flank

- Description : Iron Ore Mine (Australia)
- Mine Owner: BHP
- EPC: Jacobs & Clough
- Total Amount: \$1.6 Million AUD
- Number of Fixtures: 2000
- Dialight Fixtures: Area lights, Bulkheads, Floods, High Bays, Linears, Streetlights

BHP

CLOUGH

Jacobs



Major Greenfield Projects - APAC

Rio Tinto Western Range

- Description : Iron Ore Mine (Australia)
- Mine Owner: Rio Tinto
- EPC: Worley
- Total Amount: \$1.5 Million AUD
- Number of Fixtures: 2000
- 100% Dialight Solution
- Dialight Fixtures: Area lights, Bulkheads, Floods, High Bays, Linears, Streetlights

RioTinto



Major Greenfield Projects - APAC

FMG Eliwana

- **Description :** Iron Ore Mine (Australia)
- **Mine Owner:** Fortescue
- **EPC:** FMG, Cimtec, Primero
- **Total Amount:** \$1.2 Million AUD
- **Number of Fixtures:** 1800
- **100% Dialight Solution**
- **Dialight Fixtures:** Area lights, Bulkheads, Floods, High Bays, Linears



Major Greenfield Projects - APAC

Mount Marion Lithium

- **Description :** Lithium Mine (Australia)
- **Mine Owner:** MRL
- **EPC:** CSI
- **Total Amount:** \$1.1 Million AUD
- **Number of Fixtures:** 1500
- **100% Dialight Solution**
- **Dialight Fixtures:** Area lights, Bulkheads, Floods, High Bays, Linears



Major Greenfield/Browfield Projects - ME

ADNOC Gas – Habshan Abu Dhabi

Description: Alumina Refinery Refurbishment MRO
Mud Area & Safety Shower

End user: Emirates Global Aluminium – Taweelah
Refinery

Total Amount: \$850k USD

Number of Fixtures: 1200x

100% Dialight Solution

Dialight Fixtures: Floodlight, High bays, Linears,
Streetlights, Safety Green Shower Bulkhead



Major Greenfield/Browfield Projects - ME

ADNOC Gas – Habshan Abu Dhabi

Description: Habshan 0-4 / 5 - Refurbishment MRO

End user: ADNOC Gas – Habshan 0-4 Plant, Habshan 5 Plant

Total Amount: \$550k USD

Number of Fixtures: 1200x

100% Dialight Solution

Dialight Fixtures: Floodlight Z2, Bulkhead Z1, High bays Z1, Linears Z1, Streetlights



Major Greenfield/Browfield Projects - ME

ADNOC Refining Mussafah Abu Dhabi

Description: Mussafah Terminals - Refurbishment MRO

End user: ADNOC Refining – Terminals

Total Amount: \$650k USD

Number of Fixtures: 1200x

100% Dialight Solution

Dialight Fixtures: Floodlight, Bulkhead Z1, High bays Z1, Linears Z1, Streetlights



Major Greenfield Projects - APAC

Rio Tinto WTS2

- **Description :** Iron Ore Mine (Australia)
- **Mine Owner:** Rio Tinto
- **EPC:** Mondium
- **Total Amount:** \$1 Million AUD
- **Number of Fixtures:** 1500
- **100% Dialight Solution**
- **Dialight Fixtures:** Bulkheads, Floods, High Bays, Linears, Streetlights



Major Greenfield Projects - APAC

Rio Tinto WADCD

- **Description :** Iron Ore Mine (Australia)
- **Mine Owner:** Rio Tinto
- **EPC:** Worley
- **Total Amount:** \$950k AUD
- **Number of Fixtures:** 1500
- **100% Dialight Solution**
- **Dialight Fixtures:** Bulkheads, Floods, High Bays, Linears, Streetlights



Major Greenfield Projects - APAC

Freeport Indonesia - Manyar Copper Smelter

- Description : Copper Smelter
- Mine Owner: Freeport
- EPC: Chiyoda
- Total Amount: \$700k USD
- Number of Fixtures: 1850
- 100% Dialight Solution
- Dialight Fixtures: Bulkheads, Floods, High Bays, Streetlights



Major Greenfield Projects - APAC

Waitsia Gas Plant

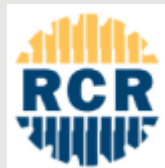
- **Description :** LNG Gas Plant
- **Mine Owner:** Mitsui
- **EPC:** Clough
- **Total Amount:** \$850k AUD
- **Number of Fixtures:** 1000
- **100% Dialight Solution**
- **Dialight Fixtures:** Bulkheads, Floods, High Bays



Major Greenfield Projects - APAC

Dugald River Project

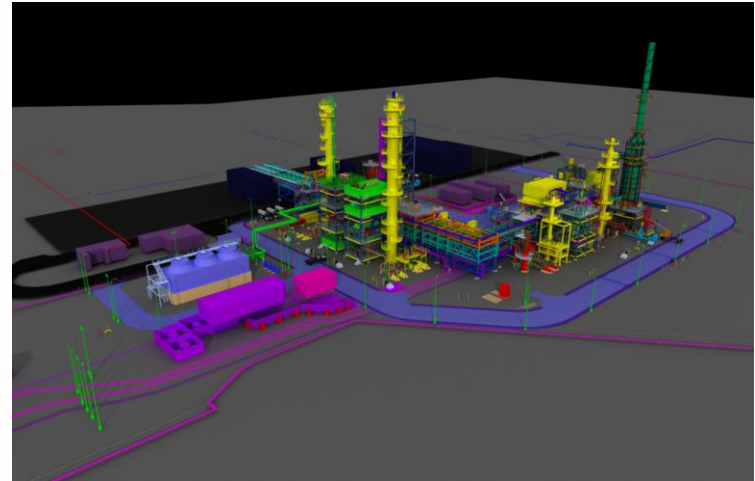
- **Description :** Zinc MIne
- **Mine Owner:** MMG
- **EPC:** Minnovo/RCR Tomlison
- **Total Amount:** \$850k AUD
- **Number of Fixtures:** 1100
- **100% Dialight Solution**
- **Dialight Fixtures:** Arealights, Bulkheads, Floods, High Bays



Major Greenfield Projects - APAC

Ampol Future Fuels

- **Description :** Petrochemical plant (Australia)
- **Mine Owner:** Ampol
- **EPC:** Kent
- **Total Amount:** \$800k AUD
- **Number of Fixtures:** 1000
- **100% Dialight Solution**
- **Dialight Fixtures:** Bulkheads, Floods, Streetlights

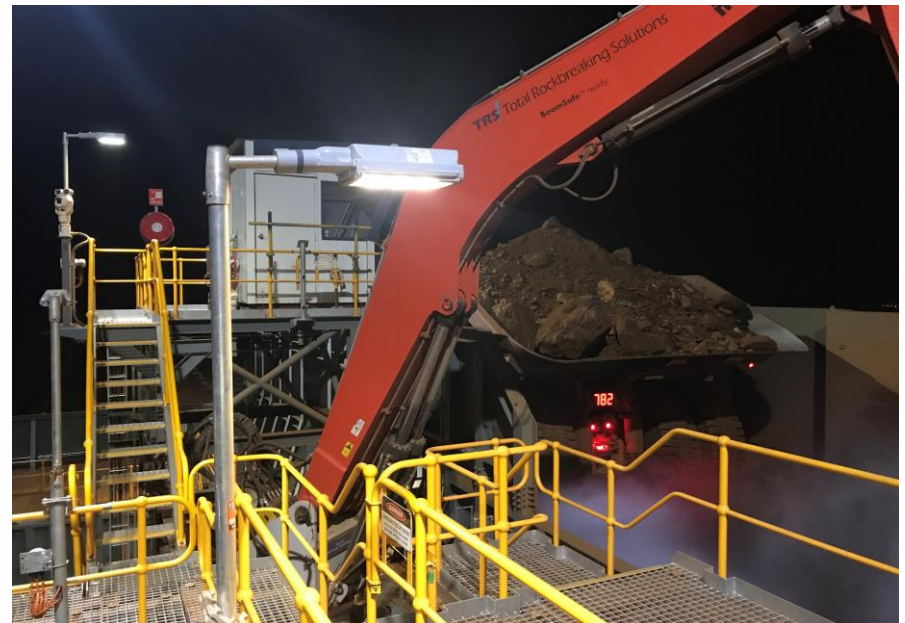
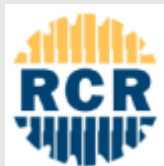


Major Greenfield Projects - APAC

Rio Tinto Silvergrass

- Description : Iron Ore Mine (Australia)
- Mine Owner: Rio Tinto
- EPC: RCR
- Total Amount: \$700k AUD
- Number of Fixtures: 1100
- 100% Dialight Solution
- Dialight Fixtures: Area Lights, Bulkheads, Floods, High Bays, Linears

RioTinto



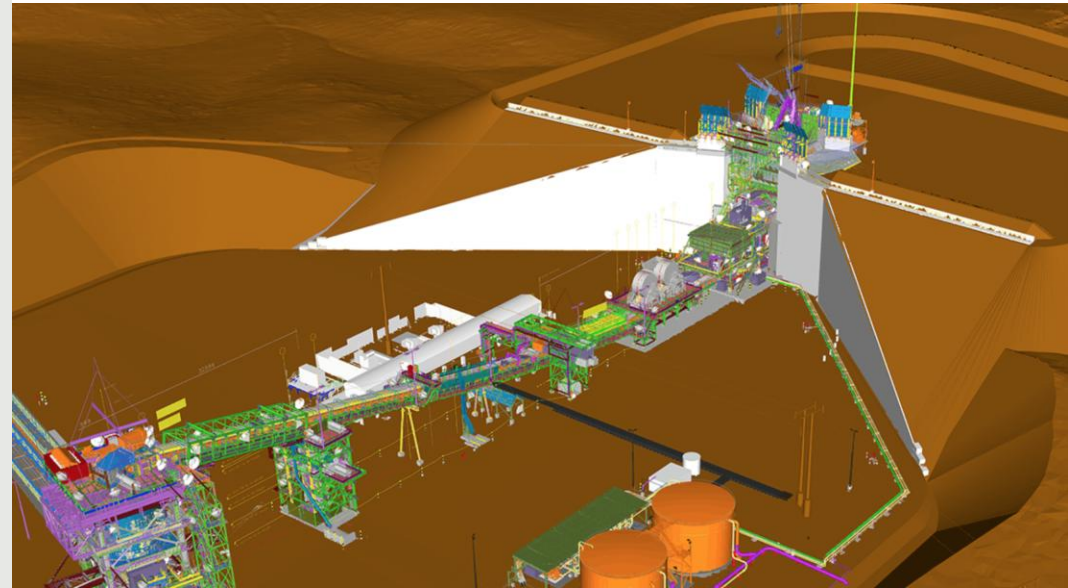
Major Greenfield Projects - APAC

BHP Western Ridge

- Description : Iron Ore Mine (Australia)
- Mine Owner: BHP
- EPC: Sedgman
- Total Amount: 750k AUD
- Number of Fixtures: 950
- Dialight Fixtures: Bulkhead, Floods

BHP

SEDGMAN



Major Greenfield Projects - APAC

BHP Jimblebar Expansion Project

- Description : Iron Ore Mine (Australia)
- Mine Owner: BHP
- EPC: Sedgman
- Total Amount: 550k AUD
- Number of Fixtures: 600
- Dialight Fixtures: Floods, High Bays

BHP

SEDGMAN



Major Greenfield Projects - APAC

Tanami TE1 Expansion

- **Description :** Gold Mine (Australia)
- **Mine Owner:** Newmont
- **EPC:** Tetra Tech Proteus
- **Total Amount:** 500k AUD
- **Number of Fixtures:** 750
- **Dialight Fixtures:** Floods, High Bays, Area Lights, Bulkheads

Newmont.

Tt TETRA TECH



Dialight

Laurence van der Linde

APAC & Middle East - Major Projects

(+61) 0417 683 353

lvanderlinde@dialight.com.au

