

Dialight

DIALIGHT



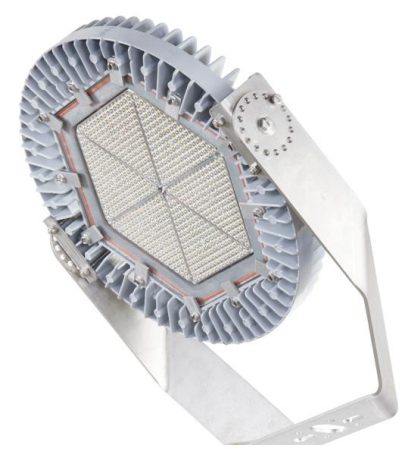
**HAZARDOUS & INDUSTRIAL LIGHTING
SOLUTIONS**

GLOBAL FOOTPRINT & EXPERTISE



WHY DIALIGHT

- VERTICALLY INTEGRATED MANUFACTURING
 - DIALIGHT DRIVERS. DESIGNED, ENGINEERED AND MANUFACTURED IN-HOUSE.
 - DIALIGHT MANUFACTURING FACILITIES – ENSENADA, PENANG, ROXBORO (U.S)
- 10-YEAR FULL REPLACEMENT WARRANTY
- LIFETIME: >150,000 HOURS @L70
- HANDLES EXTREME TEMPERATURES – 40C°UP TO + 65°C
- IP66/67
- IK10
- INTEGRATED EMERGENCY OPTIONS
- STATE OF THE ART OPTICS
- FULL RANGE OF COLOUR TEMPERATURES
 - 5000K, 4000K, 2700K, 2200K . AMBER AND GREEN OPTIONS
- HAZARDOUS AND NON-HAZARDOUS SOLUTIONS
 - ATEX/IECEX, UL, INMETRO, CE, CSA, ENEC.



PRODUCT
PORTFOLIO



HIGH BAYS



FLOODLIGHTS



**BULKHEAD &
CONVEYOR
LIGHT**



STREETLIGHTS



AREA LIGHTS



LINEARS



PORTFOLIO



HIGHBAYS & LOW BAYS

- Non-Hazardous & Zone 1
- 11,000 – 72,000 lumens
- 100-277 VAC, 120-250 VDC
- IP66/67
- Emergency Battery Backup
- Various optics available

AREALIGHTS

- Non-Hazardous & Zone 1
- 6000 – 13,000 lumens
- 100-277 VAC, 120-250 VDC
- IP66/67
- Emergency Battery Backup
- Various optics available

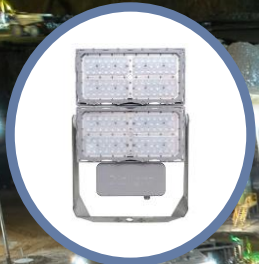
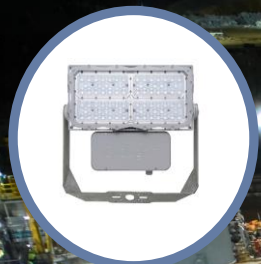
LINEAR

- Non-Hazardous, Zone 1 & Zone 2
- 2875 – 6000 lumens – 2ft & 4ft
- 100-277 VAC, 120-250 VDC
- IP66/67
- Emergency Battery Backup

STREETLIGHTING

- Non-Hazardous and Zone 2
- 12,000 – 30,000 lumens
- 100-277 VAC, 120-250 VDC
- IP66/67
- Emergency Battery Backup
- Various optics available

PORTFOLIO



FLOODLIGHTS

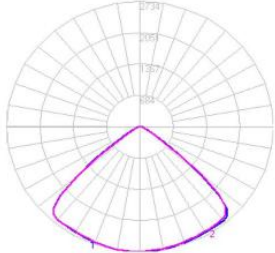
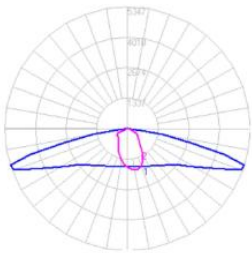
- Non-Hazardous & Zone 2
- 11,000 – 65,000 lumens
- 100-277 VAC, 120-250 VDC
- IP66/67
- Emergency Battery Backup
- Various optics available

BULKHEADS

- Non-Hazardous & Zone 1
- 3,500 – 6,500 lumens
- 22W & 45W
- 100-277 VAC, 120-250 VDC
- IP66/67
- Emergency Battery Backup
- Wide & Circular Optic
- >15m Spacing on Walkways

Ultra-Wide Walkway (Type 1) - Clear

Circular - Clear



NEW PRODUCT RELEASE

DUROSITE HIGH OUTPUT FLOOD

Key Specification

System Wattage	600W	1200W
Lumen Output	65 - 90klm	127 - 180klm
Optics	Symmetric and Asymmetric	
CCT	5000K, 4000K, 2700K, 2200K	
CRI	>70	
Warranty	5-years	
Surge Protection	20kV	
Weight (kg)	23.0kg (Driver = 4.6kg)	35.2 (Driver = 6.6kg)

- Non-Hazardous
- CE/ENEC/RCM
- 90,000 – 180,000 lumens
- 220 - 480 VAC
- IP66
- 5-year warranty
- Integral/External driver
- 20 – 40m mounting height

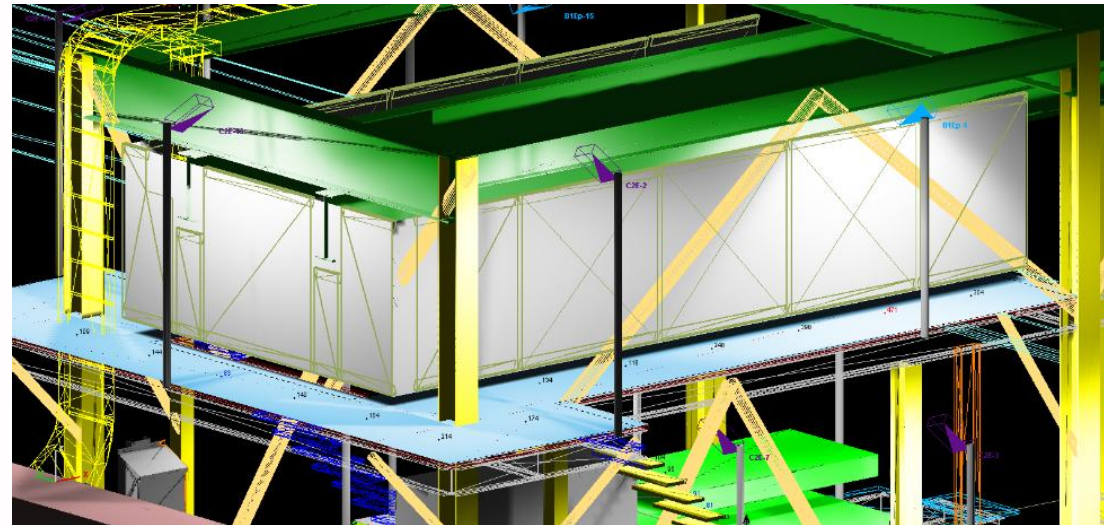
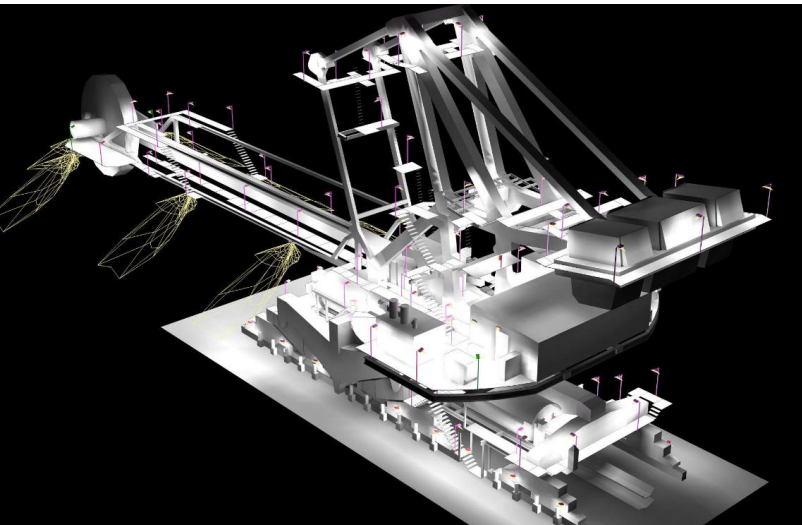


LIGHTING DESIGN SOLUTIONS



LIGHTING DESIGN SOLUTIONS

- The Dialight - End to End solution
- Pre-Feed and Feed estimations/concept designs.
- Full detail design in 2D or 3D.
- Navisworks, AutoCAD, MicroStation, Revit, Smart Plant, Solidworks, Solid Edge, PDF etc..
- Design is completed in the engineering model space.
- Luminaires are placed manually with precision in the correct coordination in model space
- Optics Optimization – Smart design solution. Best Practice lighting design
- Mounting arrangements for each luminaire, accessibility and ease of installation.
- Cost savings for EPC:
 - Time to complete design
 - Modelling (Dialux – AGI)
 - Mounting arrangements
 - Savings on qty of lights, poles, junction boxes etc.
 - Complete Material Take-Off (MTO)



LIGHTING DESIGN SOLUTIONS

RioTinto

Worley
energy | chemicals | resources

Dialight

Rio Tinto X - MTO

Label	Dialight Luminaire	Part number	QTY	Wattage	Warranty	Operating life (L70)
B5E	Vigilant EM Bulkhead - Handrail Mount - Circular Optic - 900mm Swivelpole (ST6 Base)	BHE-4BNG-6NFN-VGF + BH-FPLATE	12	48W	10 year	>150,000 hours
C1	Vigilant Bulkhead - Pole Mount - Walkway Optic (2.4m pole)	BPE-4UN2-6NNN-VGN	93	45W	10 year	>150,000 hours
C1E	Vigilant EM Bulkhead - Pole Mount - Walkway Optic (2.4m pole)	BPE-4UNG-6NNN-VGF	440	48W	10 year	>150,000 hours
C2	Vigilant Bulkhead - Pole Mount_25deg - Walkway Optic (2.4m pole)	BPE-4UN2-6NNN-VGN	60	45W	10 year	>150,000 hours
C2E	Vigilant EM Bulkhead - Pole Mount_25deg - Walkway Optic (2.4m pole)	BPE-4UNG-6NNN-VGF	92	48W	10 year	>150,000 hours
C5	Vigilant Bulkhead + LPLATE Bracket - Structure Mount - Walkway Optic - 25deg	BHE-4UN2-6NFN-VGN + BH-LPLATE-25	47	45W	10 year	>150,000 hours
C5E	Vigilant EM Bulkhead + LPLATE Bracket - Structure Mount - Walkway Optic - 25deg	BHE-4UNG-6NFN-VGF + BH-LPLATE-25	35	48W	10 year	>150,000 hours
C7	Vigilant Bulkhead + ADJ Bracket - Ceiling Mount - Walkway Optic	BHE-4UN2-6NFN-VGN + BH-BRKT-SS-ADJ	9	45W	10 year	>150,000 hours
C7E	Vigilant EM Bulkhead + ADJ Bracket - Ceiling Mount - Walkway Optic	BHE-4UNG-6NFN-VGF + BH-BRKT-SS-ADJ	17	48W	10 year	>150,000 hours
C8	Vigilant Bulkhead + ZPLATE Bracket - Ceiling Mount - Walkway Optic	BHE-4UN2-6NFN-VGN + BH-ZPLATE	12	45W	10 year	>150,000 hours
C8E	Vigilant EM Bulkhead + ZPLATE Bracket - Ceiling Mount - Walkway Optic	BHE-4UNG-6NFN-VGF + BH-ZPLATE	16	48W	10 year	>150,000 hours
C9	Vigilant Bulkhead + Tunnel Bracket - Structure Mount - Walkway Optic	BHE-4UN2-6NFN-VGN + BH-LPLATE-50	16	45W	10 year	>150,000 hours
C9E	Vigilant EM Bulkhead + Tunnel Bracket - Structure Mount - Walkway Optic	BHE-4UNG-6NFN-VGF + BH-LPLATE-50	12	48W	10 year	>150,000 hours
F1	81W ProSite Flood - Wide Beam - Structure mount	F1E-N6L2-BDEN-VGN	6	81W	10 year	>150,000 hours
F3	234W ProSite Flood - Wide Beam	F1E-N6L2-FDEN-VGN	7	234W	10 year	>150,000 hours
F3P	234W ProSite Flood - Wide Beam - 2.4m Pole mount	F1E-N6L2-FDEN-VGN	24	234W	10 year	>150,000 hours
FL6	485W ProSite Flood - Wide Beam	F2E-N6L8-NDEN-VGN	6	485W	10 year	>150,000 hours
FA	234W ProSite Flood - Asymmetric Beam	F1E-7FL2-FDEN-VGN	9	234W	10 year	>150,000 hours
FA-3	3x 234W ProSite Flood - Asymmetric Beam on 10m Hinged pole	F1E-7FL2-FDEN-VGN	27	234W	10 year	>150,000 hours
FLA	485W ProSite Flood - Asymmetric	F2E-7FL8-NDEN-VGN	16	485W	10 year	>150,000 hours
H1	80W Vigilant High bay	HEE7MN2ANH-VZGN	2	80w	10 year	>150,000 hours
GS	Vigilant EM Bulkhead - Green Showerlight - Pole mount	BPE-6BGG-3NFN-VGG		24W	10 year	>150,000 hours

958

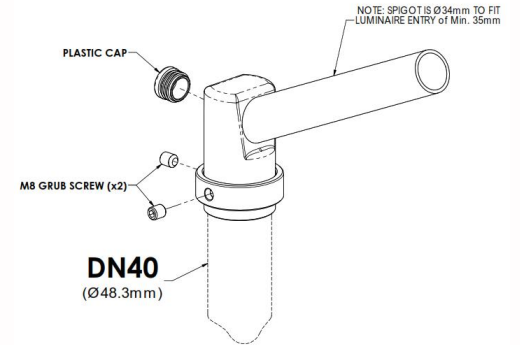
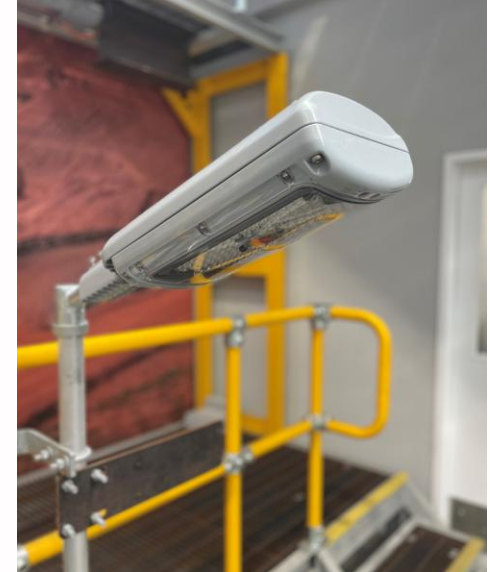
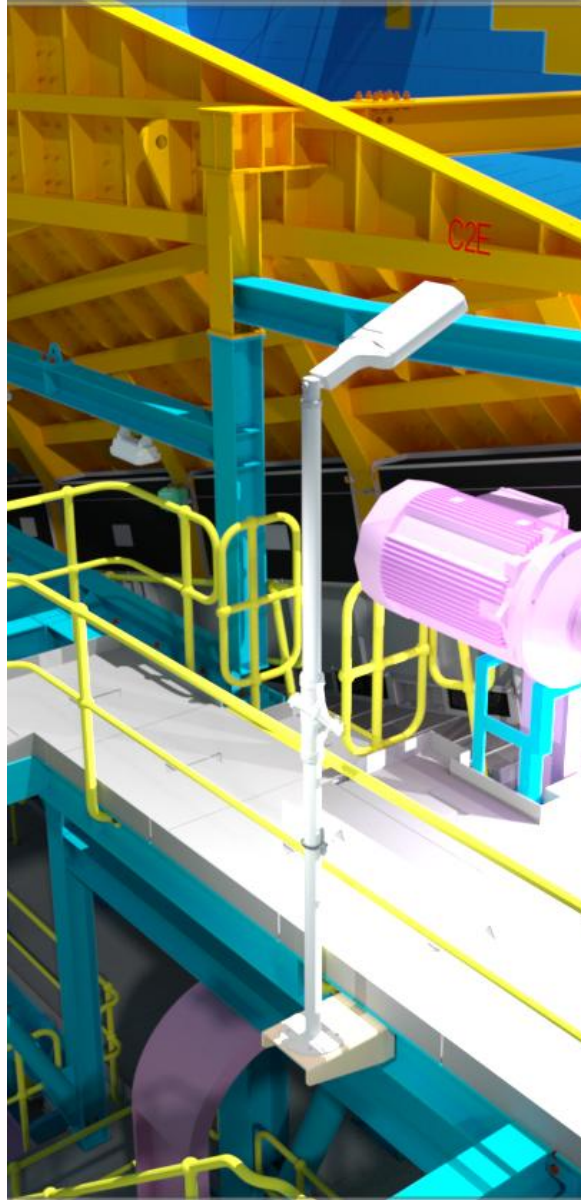
Pole & Brackets required	QTY
* LMK 1101 Spigot required to pole mount C1 & C1E	533
* LMK 1111 Spigot required to pole mount C2 & C2E	152
* LMK 5101 required to pole mount F3P	24
* 2.4m Swivelpole	709
* 10m pole	9
* 20m pole	2

- * Poles by others
- * All Dialight fixtures comes with mounting brackets
- * All Emergency fixtures have integral batteries
- * LMK by Swivelpole
- * Dialight recommends that all installations should use secondary retention (appropriate to the installation environment) where applicable.

LIGHTING DESIGN SOLUTIONS

- Detailed MTO

- Luminaire requirements
- Mounting brackets requirements
- Pole requirements
- Pole spigot requirements
- All Lights are labelled in design



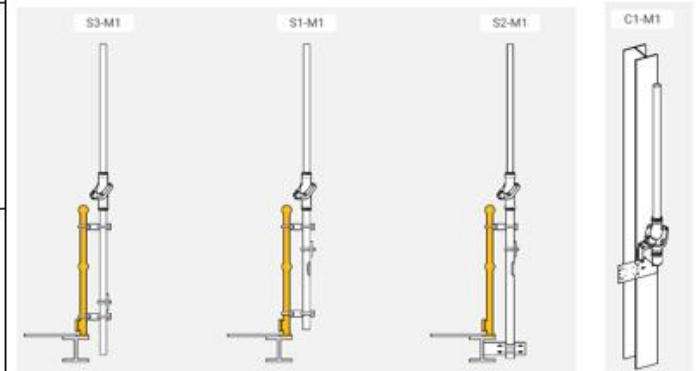
PART NUMBER = LMK1111-40-DD-HG

MATERIAL = Steel - HDG Finish
WEIGHT = 0.9 kg

SUPPLIED WITH 2 x M8 GRUB SCREWS & PLASTIC CAP

LIGHTING DESIGN SOLUTIONS

Luminaire Types			
Type B, BE, B1, B1E			
Type B2, B2E			
Type B3, B3E			
Type S1, S1E			
Type S2, S2E C2, C2E			
Type F1, F3, FA		<p>Angled Bracket</p>  <p>Dimensions in mm (inches)</p>	<p>IT Working System</p> 



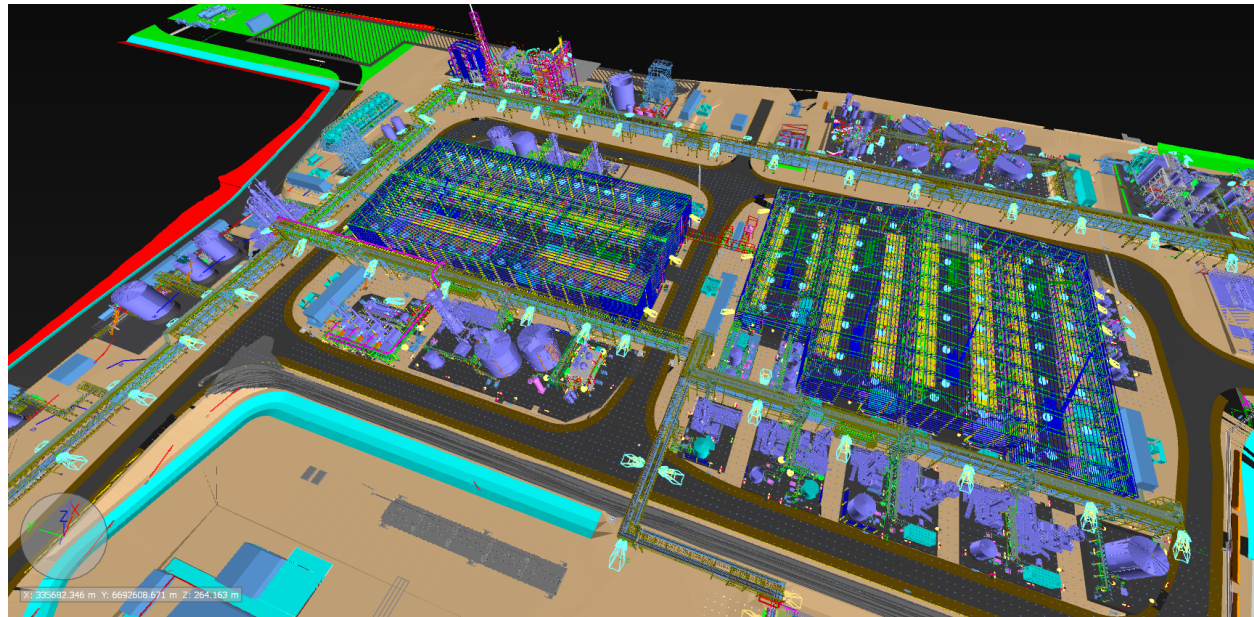
LMK5101-40

LIGHTING DESIGN SOLUTIONS

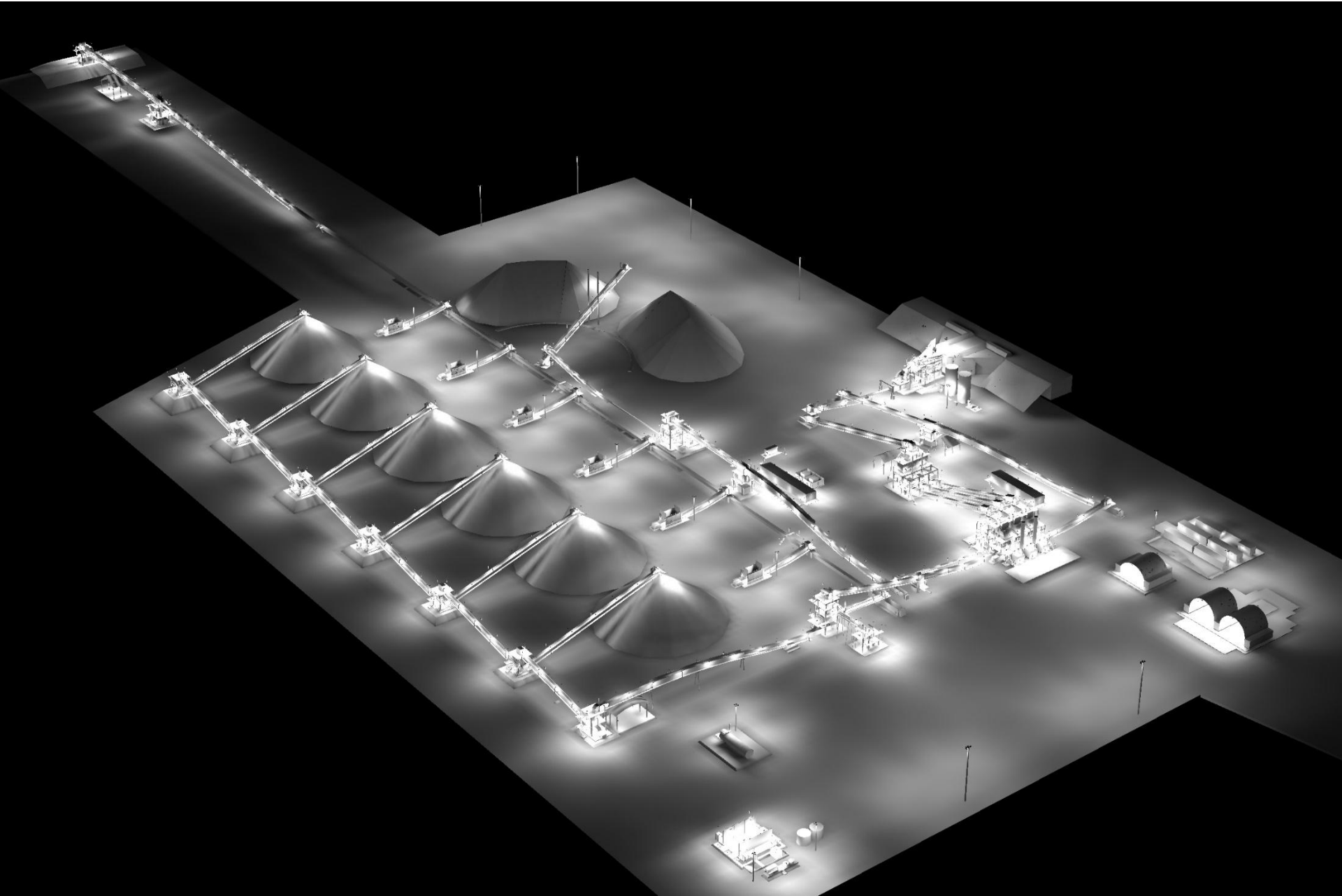
SUMMARY - DELIVERABLES

- Full 3D Lighting design – imported from Navisworks or relevant 3D Software
- PDF lighting reports
- Full Material Take-off - MTO
- Data Sheets
- Luminaire 3D files exported into all relevant Engineering Software (3d Models) to exact coordinates as per model provided
- Labelling of luminaires boxes according to design

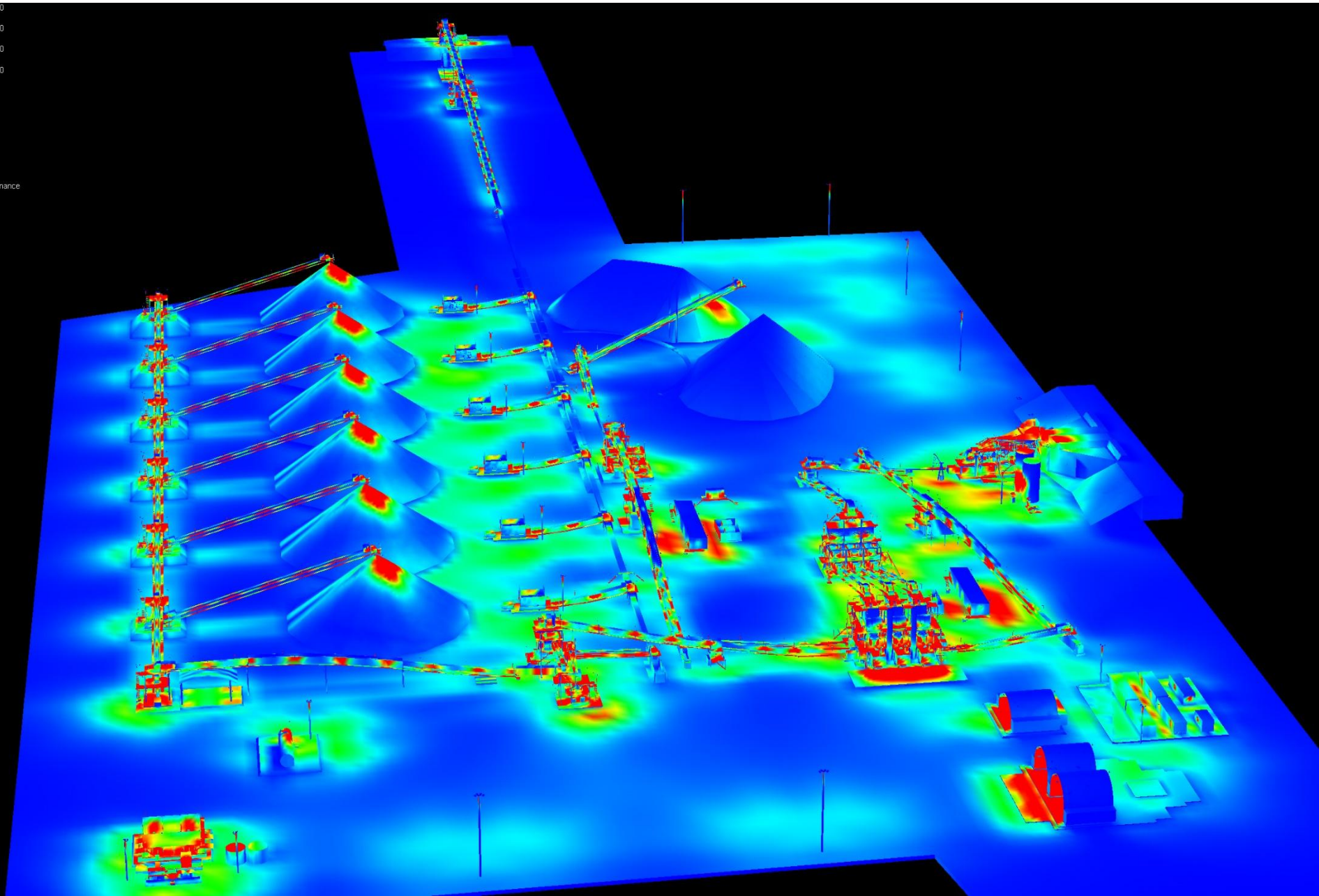
End to End Solution



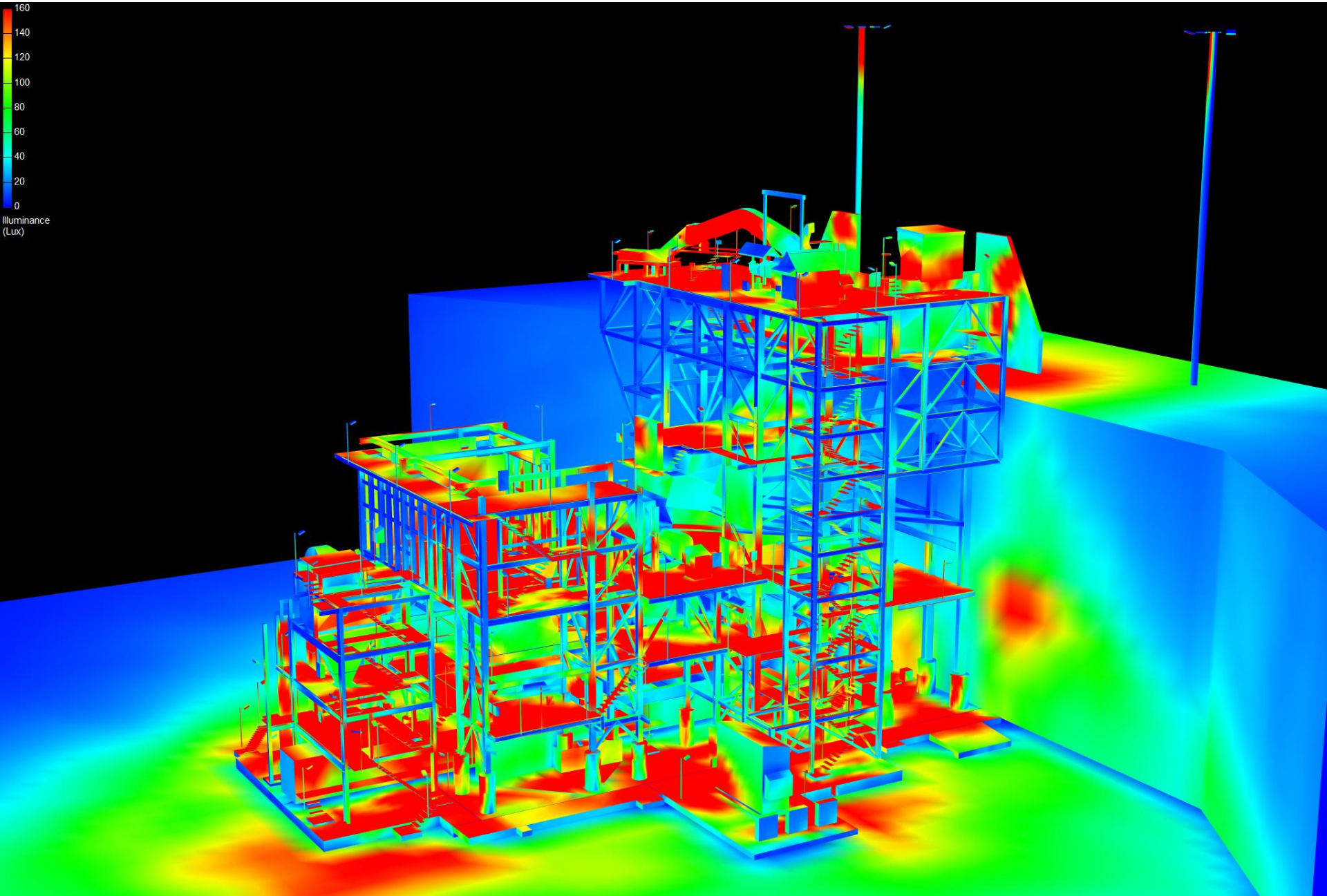
LIGHTING DESIGN EXAMPLES

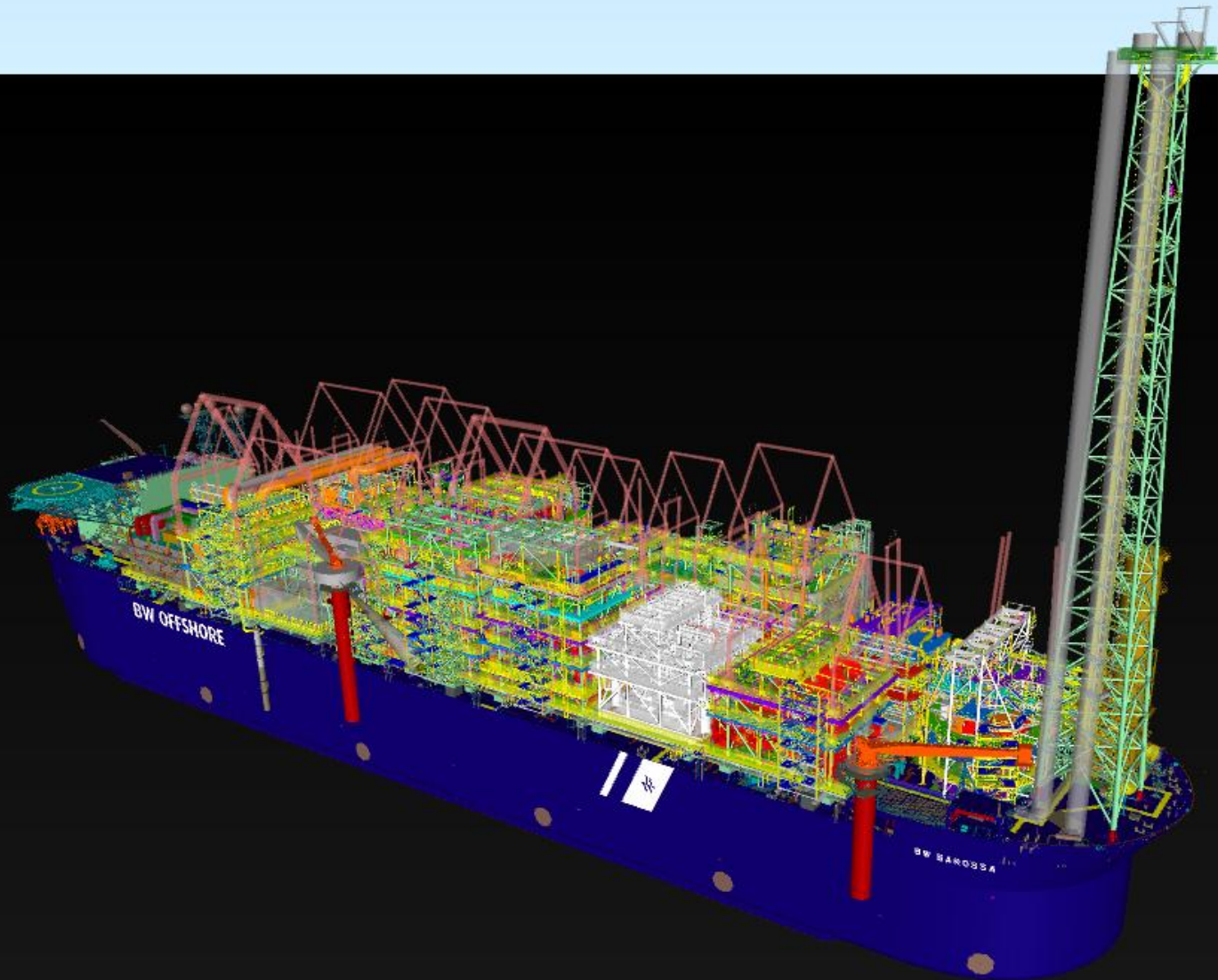


180
140
120
100
80
60
40
20
0
Illuminance
(Lux)

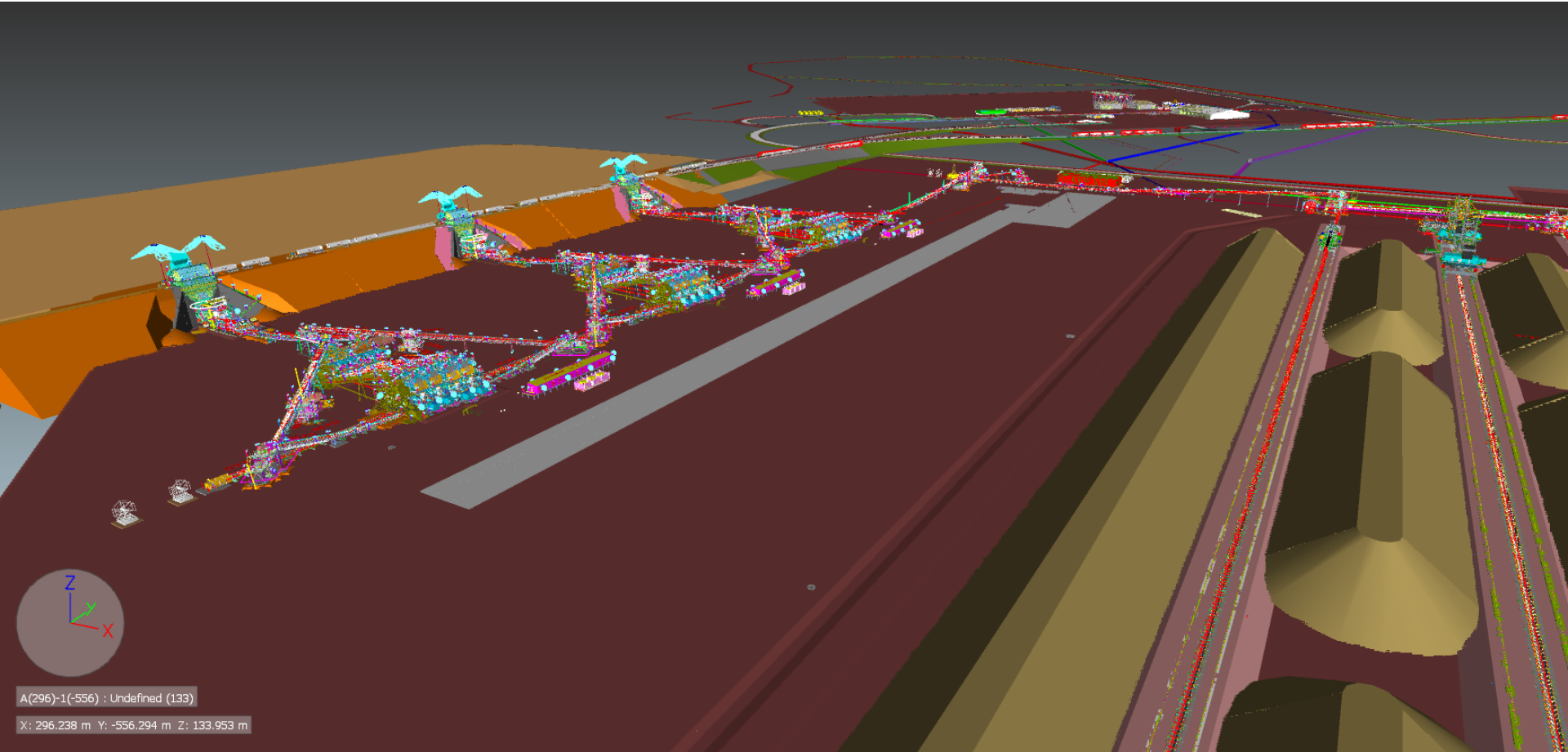


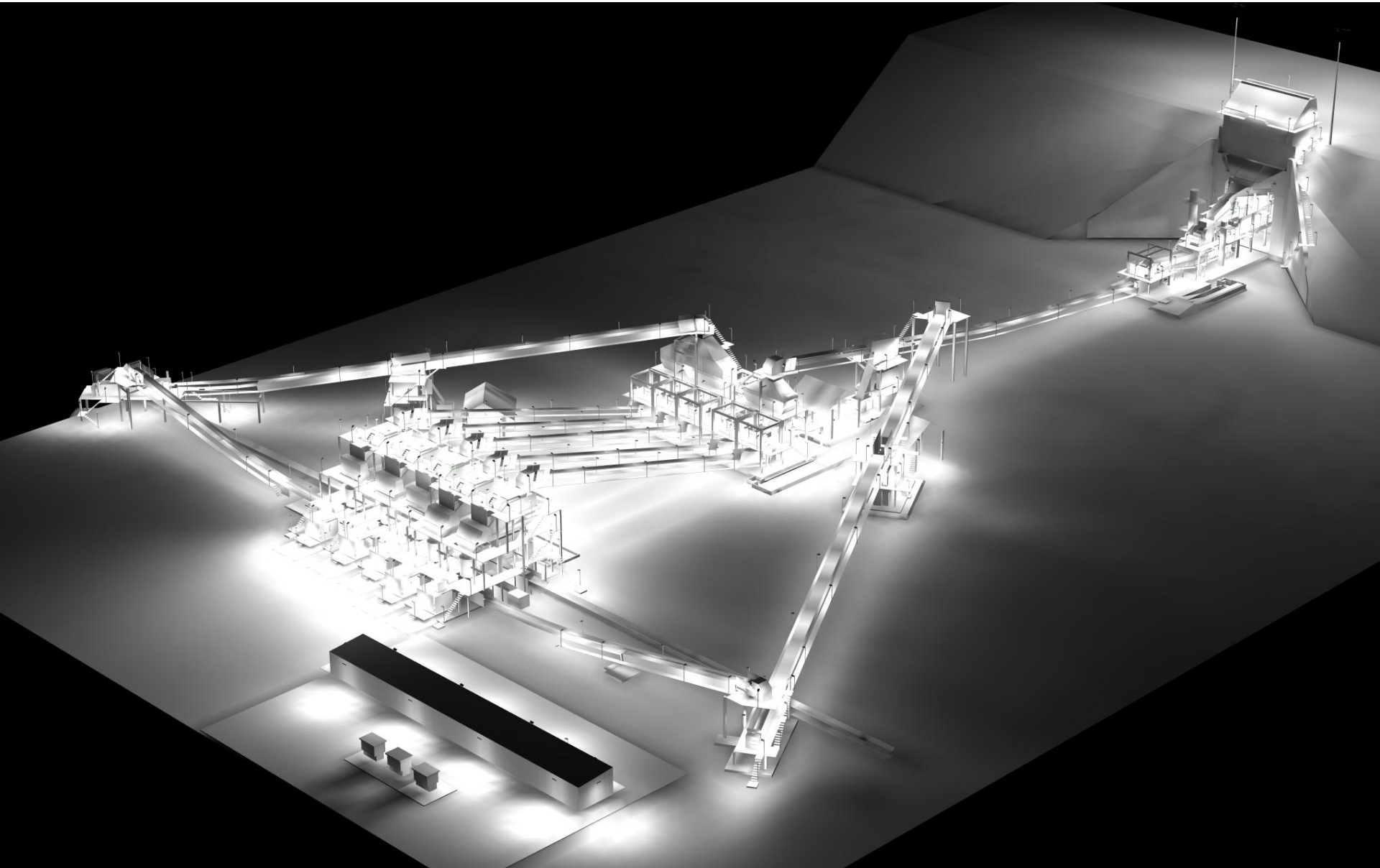


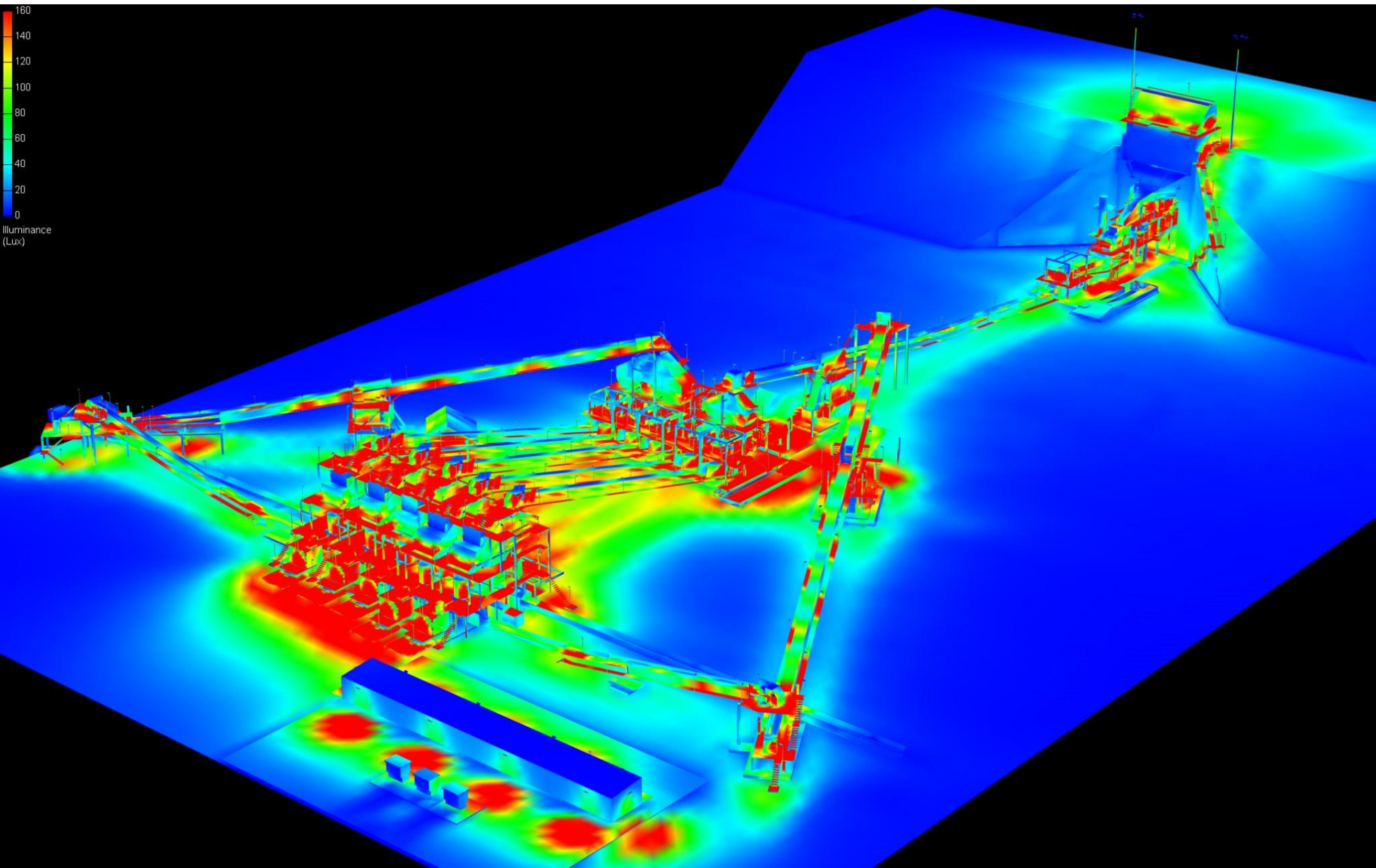






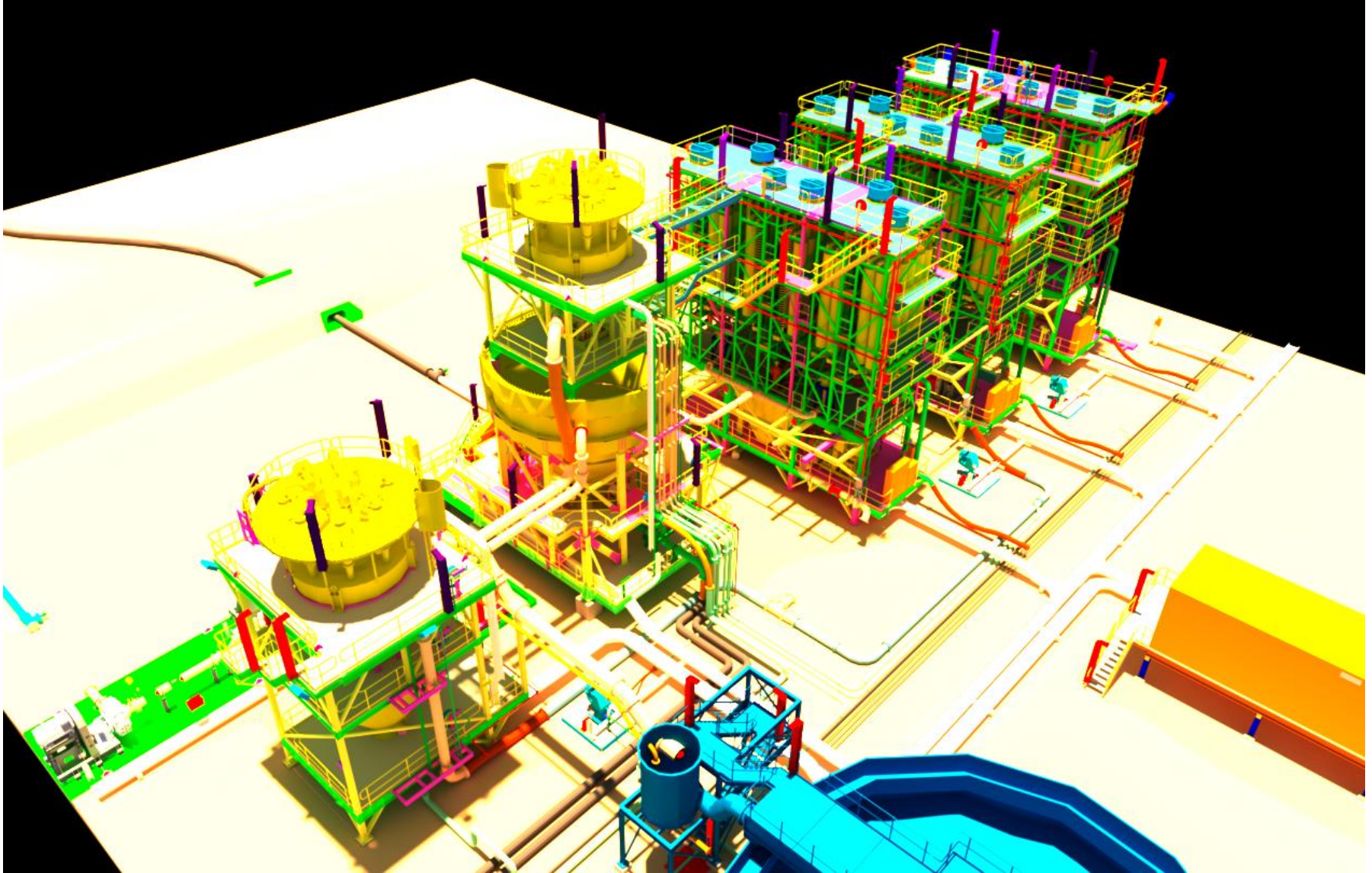




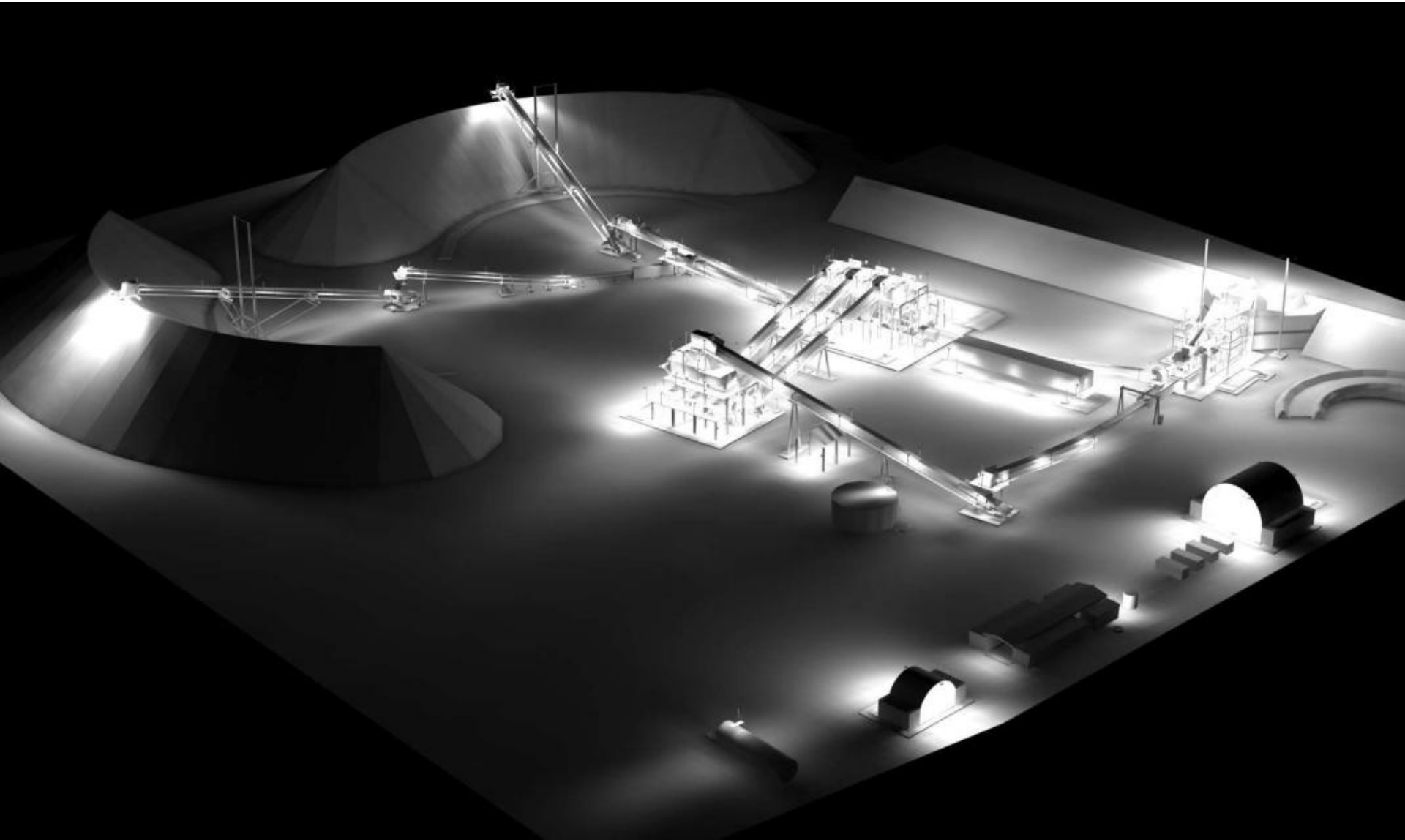


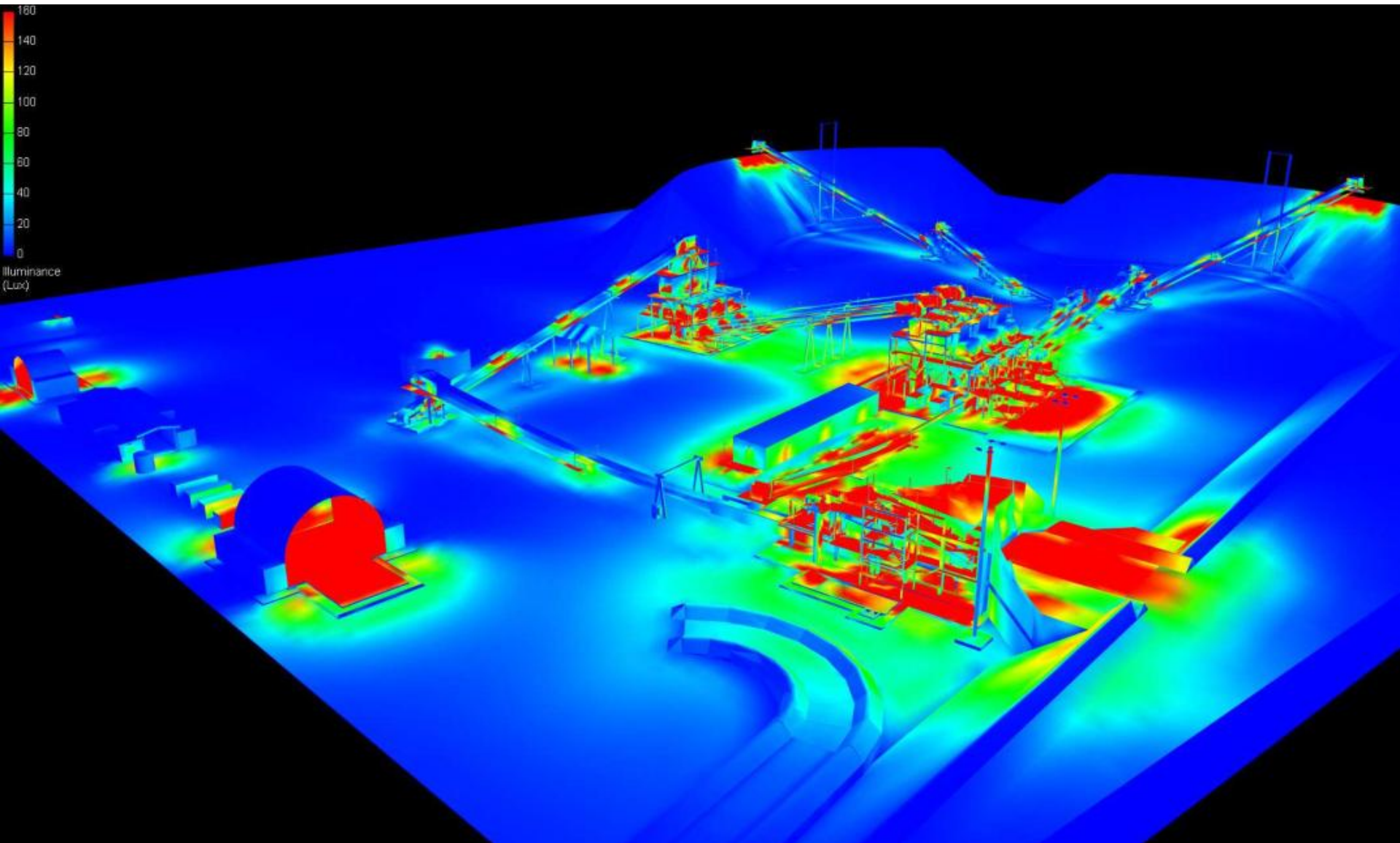




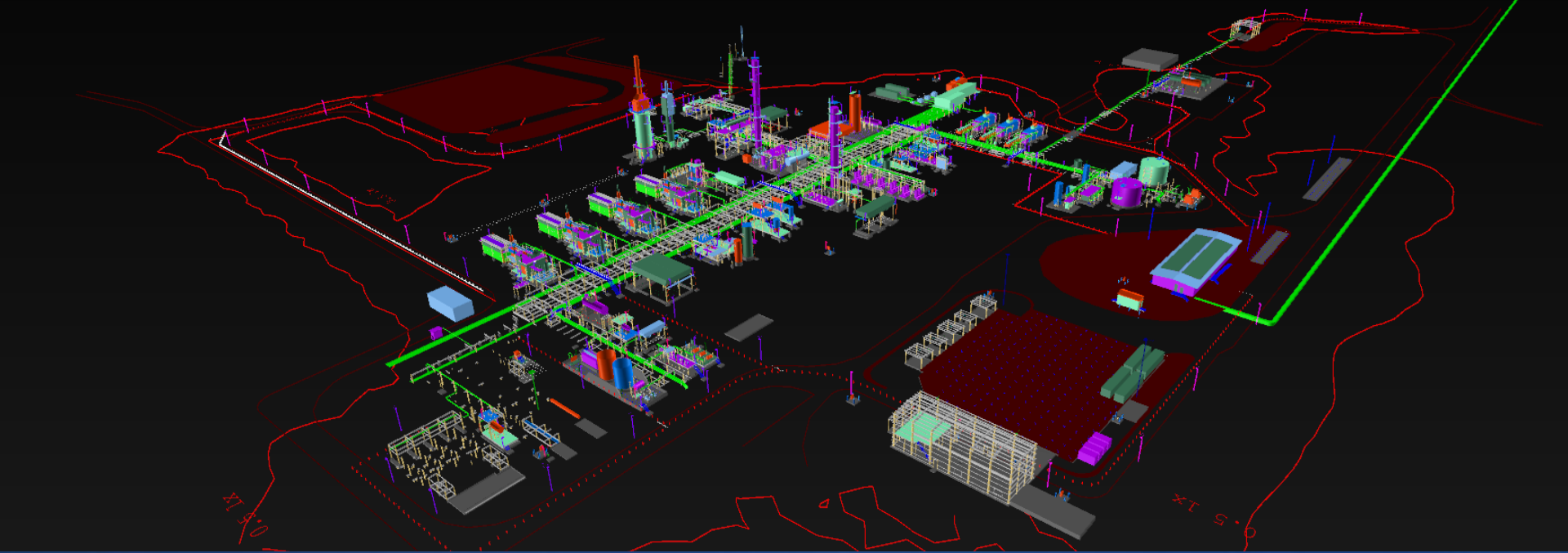


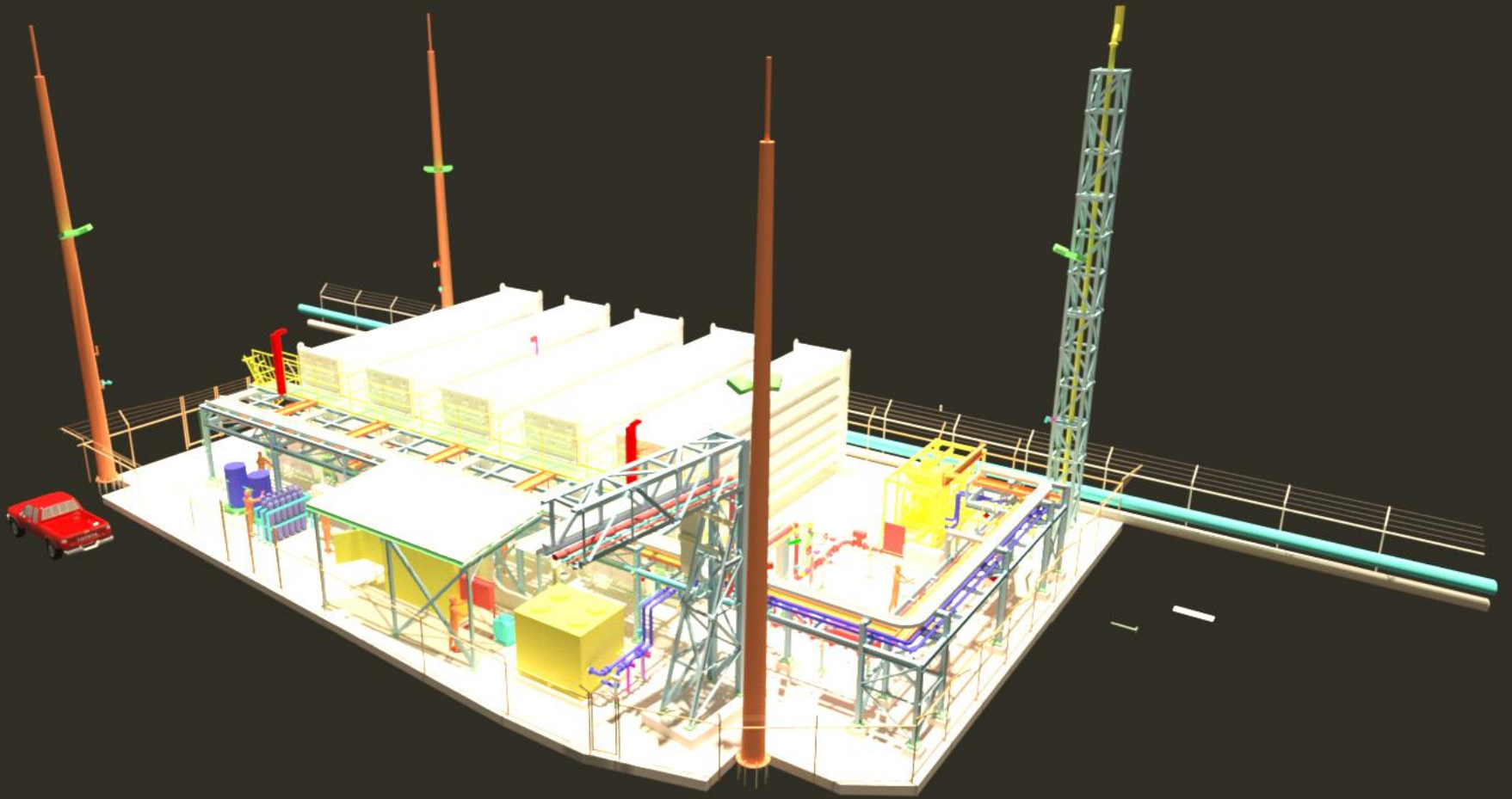


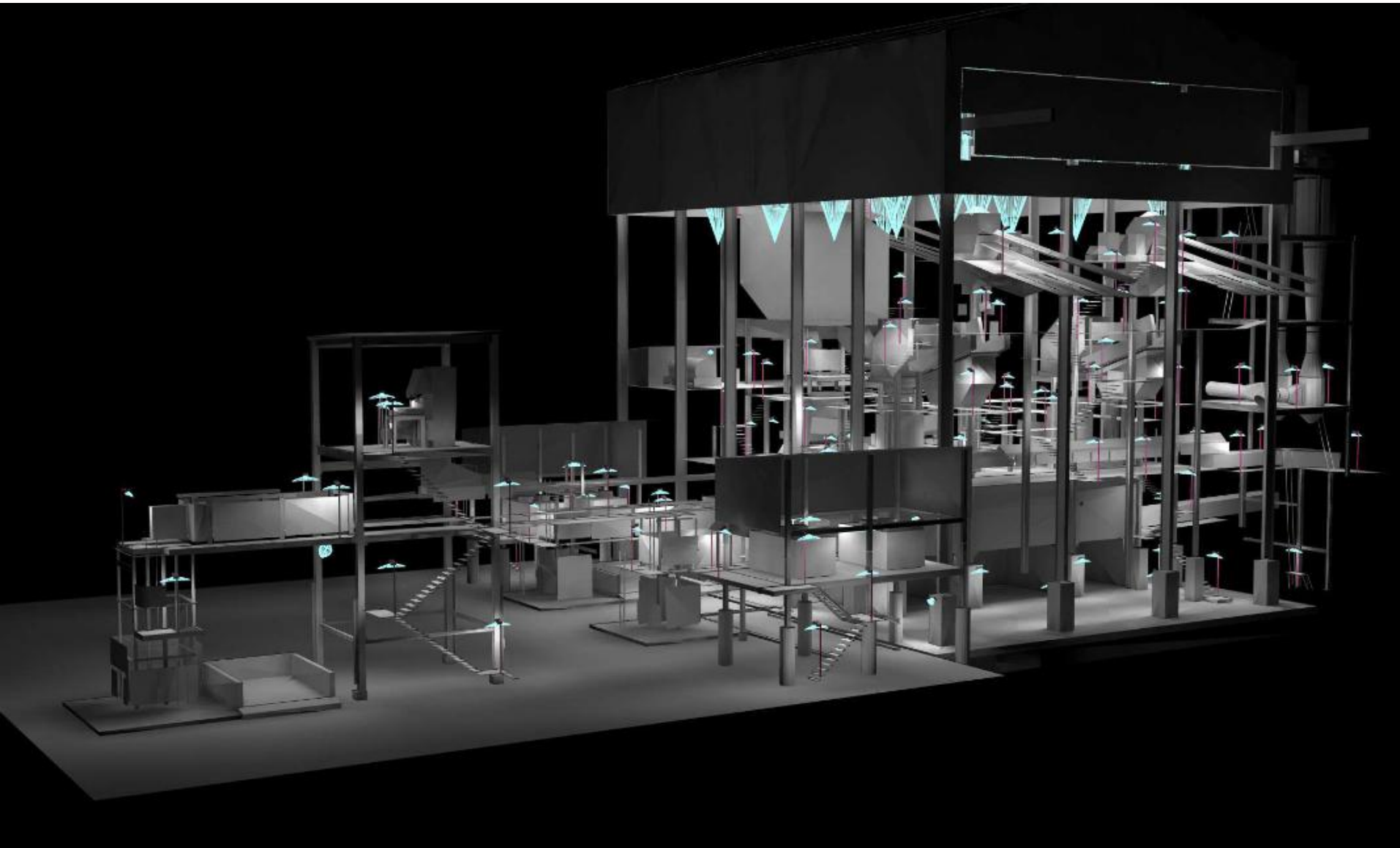


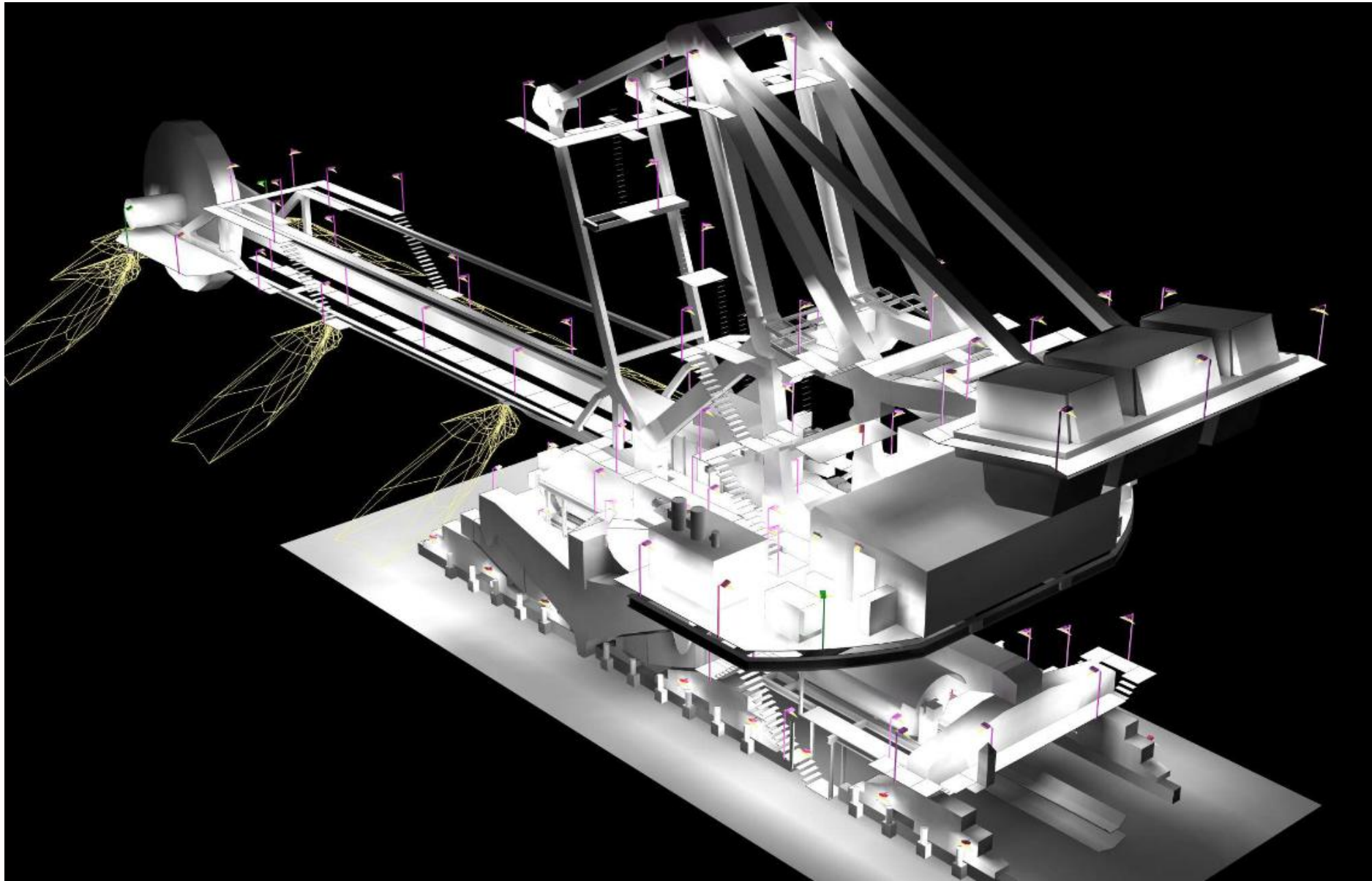




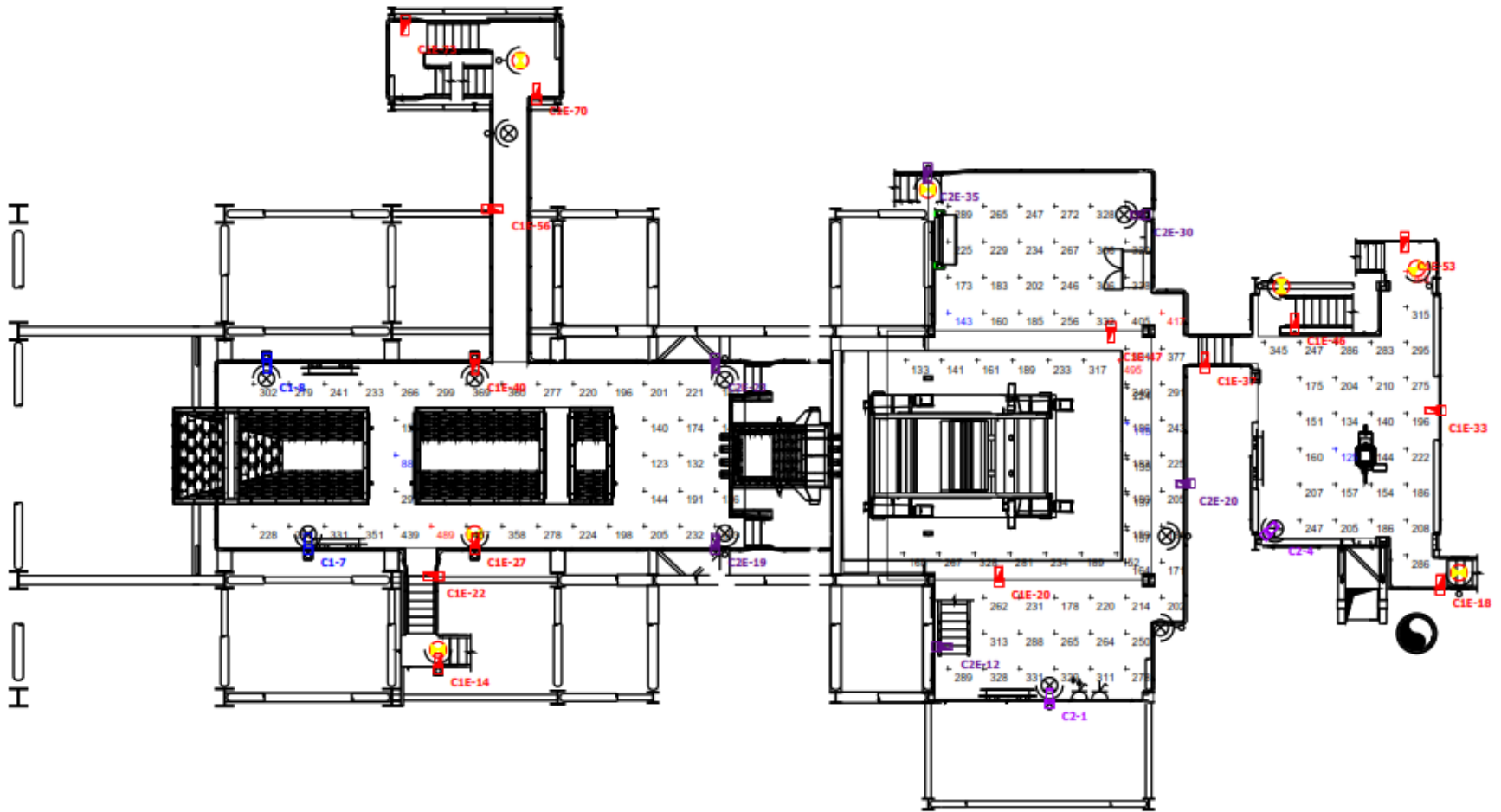








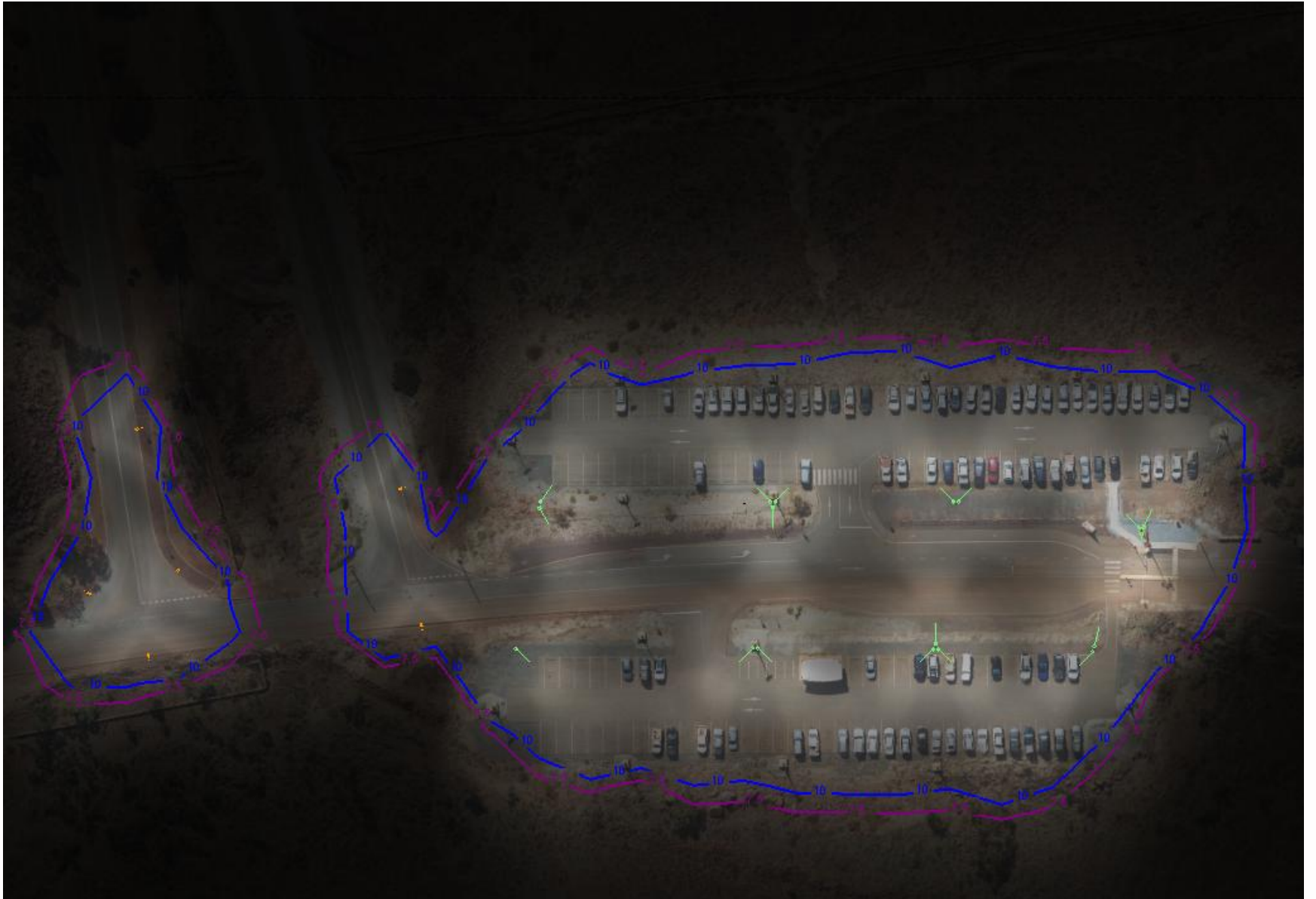
Level 1



File: 11111
Date: 11-11-2011







Dialight

Phil Compson - Director of Sales – Asia & The Middle East

Ziad Taha – Director of Sales – Middle East

Laurence van der Linde – Major Projects

